



THE BOOK OF ANU NA KI
(THE BOOK OF HEAVEN & EARTH)
(THE BOOK OF CIRCLE & SQUARE)
(THE BOOK OF HEAD & HEART)
(THE BOOK OF 3 & 4)



YOUR CHAKRAS ARE THE ANUNAKI

[Anatomical]: **You** (a Physical Human) are Conceived from the **Egg (Vessel)** of **Your Mother (Woman)** & the **Sperm (Light)** of **Your Father (Man)**. A Divine **Spark** of **Light (Life)** is Released with the **Formation** of **Your Zygote (Yoke)**. Both the Zygote & the Ziggurat are the Meeting Place of **Heaven** & **Earth**.

First: **Your Anus** is **Formed** (In Order for the Zygote to Excrete)

ANU (HEAVEN)

Second: **Your Heart** is **Formed** from a Drop of **Your Mother's** Blood

KI (EARTH)

Third: **Your Spine** is **Formed** (to Include **Your Seven** Chakras)

ANUNAKI (HEAVEN & EARTH)

Fourth: **Your Pineal** is **Formed** Exactly on the 49th Day (**7 x 7**)

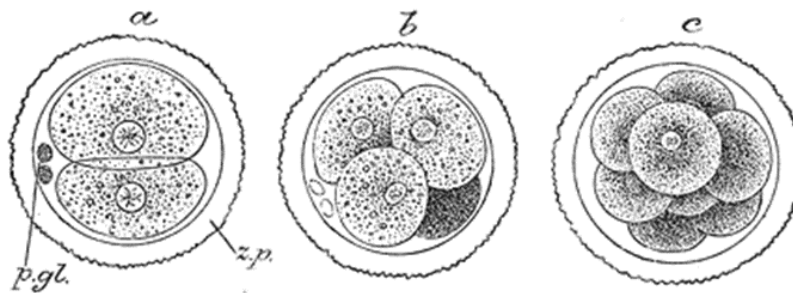
IGIGI (THE WATCHER) (SKY EYE)

The Akkadian **Anunaki** (Those Who Came from **Heaven** to **Earth**) & the Sumerian **Igigi** (The Watchers) can now be Understood Within (the Fractal Development of the Human **Form**) & Without (the Planets).

[Mythological]: The **Anunaki** (**Anunnaki**, **Anunna**, **Ananaki**, & many other variations) (**Your** Chakras) appear in the mythologies of the Sumerians, Akkadians, Assyrians, & Babylonians. The Oldest Akkadian Versions Describe **SEVEN ANUNAKI**. However, the Amount, Descriptions, & Roles they Fulfilled changed over the Course of Time (due to a few thousand years of war & Conquering among the Diaspora of Evolving Mesopotamian Cultures). This Cultural Amalgamation made the Construction of these Mythical Stories achronycal, inconsistent, & often contradictory among the Mesopotamian Pantheons. In the earliest writings about them (which come from the Post-Akkadian period) the **Anunaki** are the most powerful deities in the pantheon, descendants of **An (Heaven)**. The Primary Function of the Offspring of **An (Your Chakras)** is to decree the Fates of Humanity, & **Nabu (Mercury)** is the Scribe of Your Fate.

The **Anunaki (Your Chakras)** are the offspring of **An (Heaven)** & his consort, the **Ki (Earth/Heart)**. The oldest of the **Anunaki (You)** was **Enlil (Venus)**, the god of **air** & chief god of the Sumerian pantheon [because the Sumerians arose during the Age of **Taurus**, Ruled by **Venus** (4,000 – 2,000 BC)]. The

Sumerians believed that, until **Enlil (Venus)** was born, **Heaven (Your Head)** & **Earth (Your Heart)** were inseparable. Then, **Enlil (Venus)** Cleaved **Heaven (AN)** & **Earth (KI)** in two & carried away the **Earth (Your Heart)** while **Enlil's (Venus')** father **An (Heaven)** carried away the sky (**Your Head**).



[Anatomical]: The 10-Day Germinal Stage is the **time** from fertilization through the development of the early Embryo until implantation is completed in the **Uterus (Taurus)**. During this stage, the Zygote (Yoke) begins to divide, in a process called Cleavage (a Series of Rapid Mitotic Cell Divisions).

[Sumerian]: In **Inanna's (Venus')** Descent into the **Netherworld (Capricorn)**, the **Anunaki (Your Chakras)** are portrayed as **SEVEN** Judges who sit before the Throne of Ereshkigal (**Sirius**) (Queen of the Great **Earth**) in the **Underworld** (1 JAN, Zenith of **Sirius, Capricorn, Cardinal Earth**). Later Akkadian texts (such as The Epic of **Gilgamesh**) follow this portrayal.

[Old Babylonian Period]: The **Anunaki (Your Chakras)** were believed to be the chthonic deities of the **Underworld (Capricorn)**, while the Gods of the **Heavens** were known as the **Igigi (Your Pineal)**.

[Ancient Hittite]: Identified the **Anunaki (Your Chakras)** as the Oldest Generation of Gods, who had been overthrown & banished to the **Underworld (Capricorn)** by the Younger Gods.

[Philo of Byblos]: The Zophasemin (Watchers of **Heaven**) were "**living** beings who had no perception, out of whom intelligent beings came into existence" & "they were formed like the shape of an **Egg**."

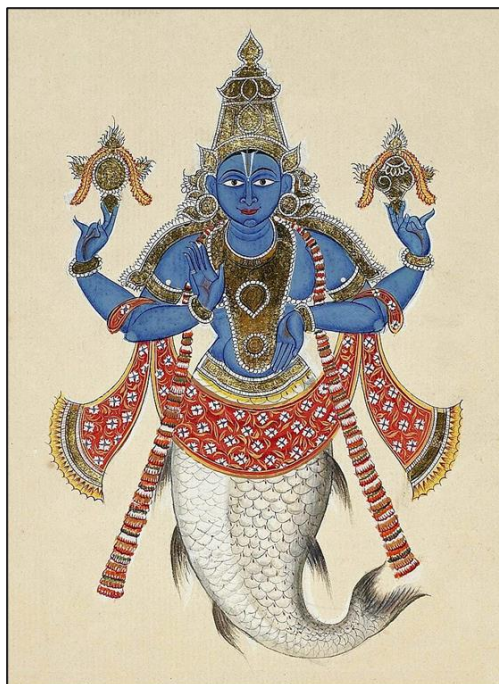


The **Anunaki** Ride into Existence on **Your Father's Sperm** (Zophasemin)

ABGAL (AB = **Semen**, GAL = Great) - The Sumerian **Seven** Sages (Chakras) sent to the **Earth** by **Enki** (Lord **Earth**) at the beginning of **Time** (**Aquarius**; the beginning of the Great Year) to give human beings the sacred 'Me' (Laws) of Civilization. They were also known, by the Akkadians & Babylonians, as the Apkallu Fish & are depicted with the Body of a Fish & the Head of a Man (the New Fish Pouring from **Aquarius** Jug & into the **Eridanus**, which flows into **Orion**, upon the Great Year) or with the torso of a Fish & Human Arms, Legs & Head, sometimes with & sometimes without Wings. In the Babylonian tradition, the Apkallu also appear as Griffins or simply as Humans with Wings. The Abgal Carry a Bucket (**Aquarius**) & a Cone of Incense (**Pineal**, ruled by **Mercury**) for **Purification**. By name, they were **Adapa** (the **First** Man), Uan-dugga, En-me-duga, En-me-galanna, En-me-buluga, An-**Enlil**da (**Venus**) & **Utu-Abzu** (**Sun-Your Semen**).

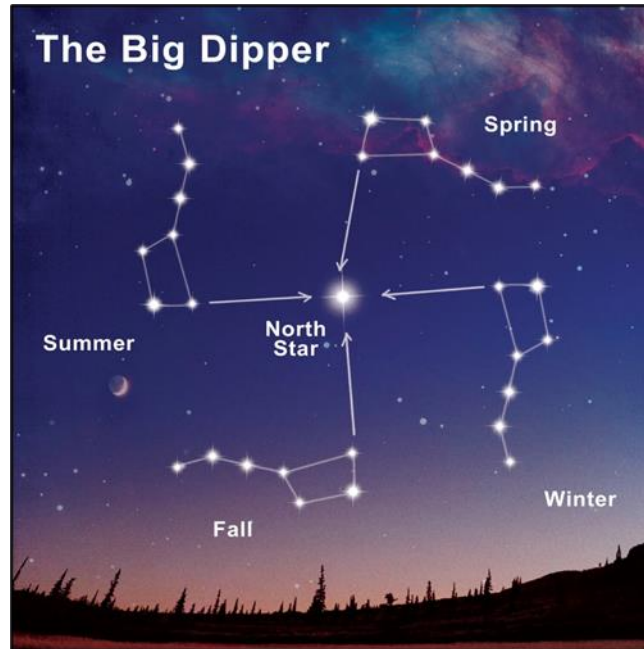
APKALLU (AP = **Semen**, KALLU = **Messenger**) – The Akkadian Apkallu are found in cuneiform inscriptions & in general mean either "wise" or "sage." The terms Apkallu (as well as Abgal) are also used as an epithet for Kings & Gods as a mark of **Wisdom** or **Knowledge**. A further use of the term Apkallu is when referring to figurines used in apotropaic rituals; these figurines include Fish-Man hybrids representing the **Seven** Sages (Chakras), but also include Bird-Headed Griffins & other figures.

In several contexts the Apkallu are **Seven** Demi-Gods (Chakras), sometimes described as part Man & part Fish, associated with Human **Wisdom**. Each Sage has an association with a specific mythic King. After the **Seventh** Sage & King, a Deluge (see Epic of **Gilgamesh**) is said to have occurred. Records list further Sages & further Historic King pairings. Post-deluge, the Sages are considered **Human**, & in some texts are distinguished by being referred to as **Ummanu**. This is a Direct Synchronization with Ancient Hinduism & the Story of Lord **Manu** (The **First Man**) & the **Seven** Sages.



Matsya (**First** Avatar of **Vishnu**)

In Berossus' *Babylonia* (c. 281 BC), the Apkallu are described as Fish-Men who are sent by the Gods to Impart **Knowledge** to People. The First is **Oannes/Uanna** (**Ouranus/Uranus**) & said to have taught people the creation myth; the *Enuma Elis* (**Seven** Tablets of Creation) (Enuma = Eye)

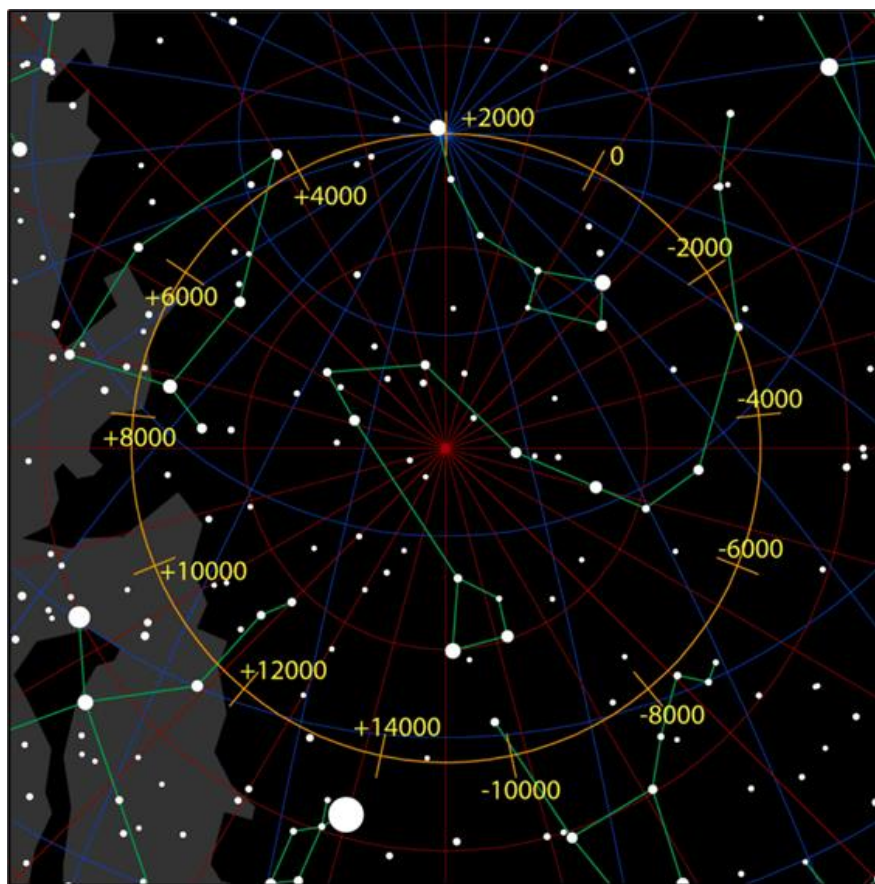


THE SEVEN RISHIS (SAGES) (SAPTARISHI) – The Hindu *Mahabharata Epic* (c. 500 BC) Names the **Seven** Rishis as the Big Dipper Constellation. Lord **Brahma** Created these Divine & Immortal Beings who Brought Precious **Knowledge** to Humanity. The **Seven** Sages are said to be those who made the **Sun** Rise & Shine. They were Happily Married to **Seven** Sisters named Krttika (the **Pleiades**).

SEBETTI/SIBITTI - **Seven** Minor Babylonian Warrior Gods (Chakras), sometimes associated with the **Anunaki** of the **Underworld**, who followed the Demon **Irra (Orion)** into battle. The Sebitti (Chakras) were not comprised of any of the major gods but were associated with **Nergal (Orion)**. They are also associated with the **Pleiades (Taurus, Venus Ruled)**.

In the *Epic of Erra*, the God **Erra** is Sleeping Fitfully with his consort **Mami/Mamītum** (the **Mother Goddess**) but is roused by his advisor **Išum (Orion/Saturn)** & the **Seven** Sebetti (Chakras), who are the sons of **Heaven & Earth (Anunaki)**. The Sebetti “Champions Without Peer” are each assigned a Destructive Destiny by **Anu (Heaven)**. The Sibitti (Chakras) call on **Erra (Orion)** to lead the Destruction of Mankind. **Išum (Orion/Saturn)** tries to mollify **Erra's** Wakened Violence, to no avail. Foreign Peoples invade Babylonia but are struck down by plague. Even **Marduk (Mars)**, the Patron of Babylon, relinquishes his Throne to **Erra (Orion)** for a time. Tablets II & III are occupied with a debate between **Erra (Orion)** & **Išum (Orion/Saturn)**. **Erra (Orion)** goes to Battle in Babylon, Sippar, Uruk, Dūr-Kurigalzu & Dēr. The World is Turned Upside Down, & Righteous Unrighteous are Killed alike. **Erra (Orion)** orders **Išum (Orion/Saturn)** to complete the work by Defeating Babylon's Enemies. Then the god withdraws to his own seat in Emeslam with the Terrifying **Seven** (Chakras), & Mankind is Saved. The Poet of the *Epic of Erra* Exclaims “You Changed Out of Your Divinity & Made Yourself Like a Man.”

THE SEVEN AGAINST THEBES – In Greek Mythology, the **Seven** Against Thebes were **Seven** Champions who made War on Thebes. They were chosen by Adrastus (King of Argos) to be the Captains of an Argive Army whose purpose was to restore Oedipus' son Polynices to the Theban Throne. The **Seven** were: Polynices, Tydeus, Amphiaraus, Capaneus, Parthenopaeus, Hippomedon, & Adrastus (or Eteoclus whenever Adrastus is excluded). They tried & failed to take Thebes, & all but Adrastus died in the attempt.



DRACO & THE POLE STARS

The North Circumpolar Stars are the First Course of Measure for the Completion of the Great Year (25,920-Year Tropical Cycle). There are 11 North Pole Stars. IN ORDER, the Cycles Begins with the Brightest Star, Vega (Known in Egypt as **Ma'at**) (α Lyrae) ("The Falling/Landing Eagle"), Edasich (ι Draconis), Thuban (α Draconis) ("Tail of the Dragon"), Kochab (β Ursae Minoris), Polaris (α Ursae Minoris) (Your Current North Star, known under many names, such as "The Steadfast Star", "Cynosure", & "The Marian Polar Star or Mary, Star of the Sea"), Errai (γ Cephei) ("The Shepherd"), Alfirk (β Cephei) ("The Flock of Sheep"), Alderamin (α Cephei) ("The Right Arm"), Deneb (α Cygni), & Fawaris (δ Cygni) ("The Riders"). Within the Circumpolar Stars Lay the Constellation of Draco (The Great Dragon), of which two of its own stars are Circumpolar Stars.

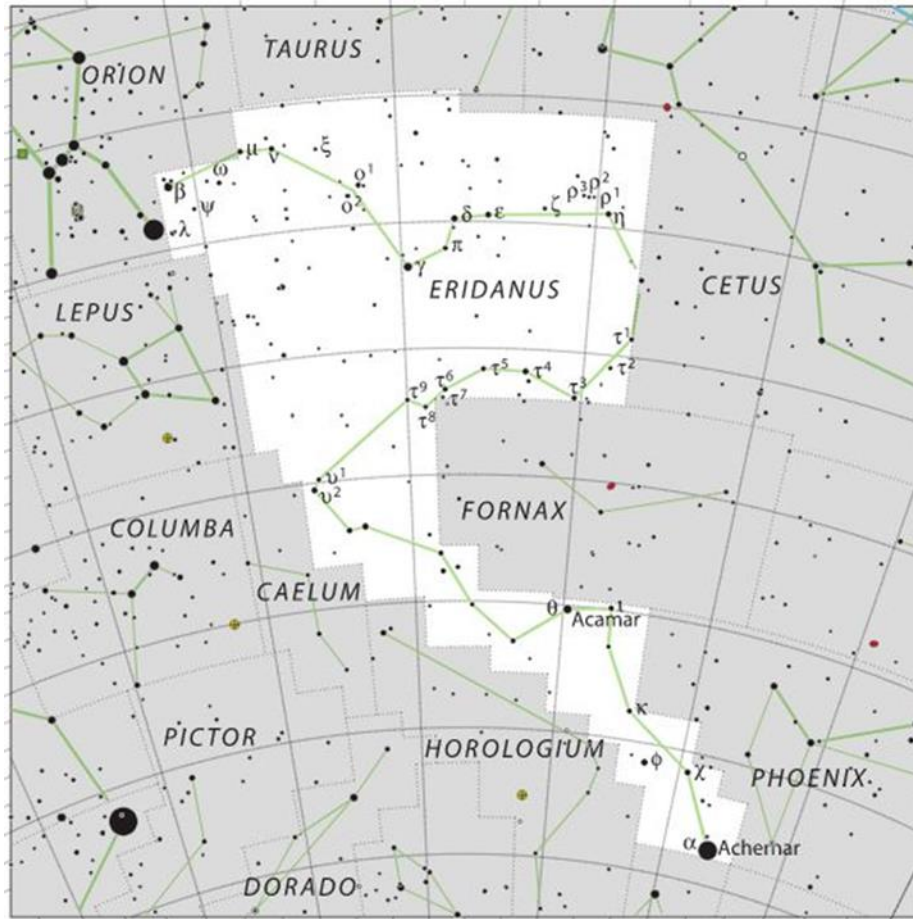
MOTHER GODDESS (NINMAH, NINTUD, NINTUR, BELET-ILI). The Mesopotamian Mother Goddess is known under many names, the most prominent of which is the Sumerian name **Nintud/Nintur**. Other frequent names are **Ninmah** & **Belet-ili**. She is the Creator of Humankind. She oversaw Pregnancy & Childbirth. She Guides Children when they are still in the Womb & Feeds them after they have been born. In the Akkadian myth of Atrahasis (a Mesopotamian Flood Story), **Nintur** Created Humankind by Mixing Clay with **Blood** (**Cardinal Earth**) of a Slain God (ref: **Adam**). In the Sumerian Tale of **Enki** (Lord **Earth**) & **Ninmah** (**Mother**) the two deities compete by creating various creatures out of clay, resulting ultimately in the Creation of Humans. The Clay is said to come from the top of the Abzu (the Cosmic Underground Waters). In Her Role as the Creator of Humankind she is eventually replaced by the God **Enki/Ea**, as visible in the Babylonian Enūma Eliš.

NAMMA/NAMMU - The Ancient Sumerian Mother Goddess of the Primeval Sea & the Early Abyss. In the Neo-Sumerian **Enki** & **Ninmah**, **Enki** (Earth Lord) is the son of **An** (Heaven) & **Nammu** (Mother), the Goddess who "has given birth to the great gods". It is she who has the idea of creating mankind, & she goes to wake up **Enki**, who is asleep in the Apsu, so that he may set the process going. The Akkadian *Atrahasis-Epos* has it that **Enlil** (Venus) requested from **Nammu** the Creation of Humans, & **Nammu** told him that with the help of **Enki** (her son) she can Create Humans in the Image of Gods. **Nammu** is also a Babylonian Minor Goddess of the same name who is associated with Fresh Water. She Gave Birth to **An** (Heaven) & **Ki** (Earth).

MAMI/MAMMITUM – The Akkadian Mother Goddess in the Atra-Hasis (Akkadian Creation Myth) & in other creation legends. She was synonymous with **Ninhursag**. She was involved in the Creation of Humankind from Clay & Blood (Ref: **Adam**). As **Nintu**, she pinched off 14 Pieces (Ref: **Osiris**) of Primordial Clay which she formed into Womb Deities (**Seven** on the Left & **Seven** on the Right with a Brick between them), who produced the first **Seven** pairs of Human Embryos. She became **Belet-Ili** ("Mistress of the Gods") when, at **Enki**'s suggestion, the Gods Slew One among themselves & used that God's Blood & Flesh, Mixed with Clay, to Create Humankind.

NINHURSAG - The Sumerian Mother Goddess, Fertility Goddess, **Nature** & **Life** on **Earth**. Her name translates as 'Lady of the Mountain Side' (21 JUN, Summer Solstice is the Mountain, due North). She was known as the 'Mother of the Gods'. She originally was a very popular goddess whose attributes were later taken on by other deities. She is also known as **Belet-Ili**, **Damgalnunna**, **Ki**, **Nintu**, **Nintur**, **Aruru**, **Ninmah**, **Mami** & **Mama** (YES. YOUR MAMA!). **Ninhursag** (Sirius) features in many of the most popular Mesopotamian myths where she is always associated with **Life**, Fertility, **Growth**, Transformation. Her primary duty was care for women & children, especially pregnant women & young children. She watched over a child from conception, through gestation, & after birth provided the child with food. As with all of the female deities in Mesopotamia, **Ninhursag** suffered a loss in status during the reign of Hammurabi of Babylon (1792-1750 BCE) & was eventually replaced as a supreme power by male gods.

TIAMAT (THE DRAGON/SEA SERPENT) – The Babylonian Primeval Mother Goddess, Mother to the Gods, Consort of **Apsu**, who appeared as a Dragon. She was defeated in battle & killed by **Marduk** (Mars). After her **death**, the Tigris & Euphrates Rivers Flowed from her Eyes. **Tiamat** was Envisaged as Salt Water & Apsu as Fresh Water. From their Union came all the other Gods.



ERIDANUS

Eridanus is a constellation in the Southern Hemisphere. It is the Heavenly River that Pours Forth from the Jug of **Aquarius** & Across the Celestial Sky into the **Head** &/or **Heart** of **Orion**. **Your** Ancestors Knew that upon the Age of **Aquarius Your Pineal** Gland may be Activated by the **Sun**. It is Encoded in ALL Your Religions & Worshipped as the Sacred River from which so many **Earthly** Rivers Around the World take their image & likeness. The Constellation is Identified with the Nile River in Egypt, the Po River in Italy (which the Greeks called **Eridanos**), the Red Sea of Egypt, the River Jordan in Israel, the Sacred Ganges in India, the Ancient City of **Eridu** in Babylon, & many others. The **Eridanus** was also taken for the name of a minor river in Athens.

The Greek Constellation **Eridanus** takes its name from the Babylonian Constellation known as the Star of **Eridu** (MUL.NUN.KI). The Ancient City of **Eridu** was in the Extreme South of Babylonia & situated in the Marshy Regions. **Eridu** was held sacred to the God **Enki-Ea (Earth)** who ruled the cosmic domain of the Abyss. His Temple was known as Abzu (House of Cosmic Waters) - a mythical conception of the fresh-water reservoir below the **Earth's** surface. The Celestial Fractal of which is the Eridanus Supervoid (an area of the Universe Devoid of Galaxies). **AB.ZU** Literally Translates as "**Your Semen**."

ABZU/APSU/ENGUR/ENGURRU (Deep Water) – The Sumerian & Akkadian name(s) for Fresh Water from **Underground Aquifers**. Lakes, Springs, Rivers, Wells, & other sources of Fresh Water were thought to draw their water from the **Abzu (Eridanus)**. In Respect to Sumerian & Akkadian Mythology it referred to the Primeval Sea below the Void Space of the **Underworld** (Kur) & the **Earth** (Ma) above. The Sumerian God **Enki** (Akkadian **Ea**) (**Earth**) lived in the **Abzu (Eridanus)** since before human beings were created. Other Deities Lived in the Abzu, to include His wife Damgalnuna, his mother Nammu, his advisor Isimud & a variety of subservient creatures, such as the Gatekeeper Lahmu.

ABZU/APSU – In the Enûma Elish (Babylonian Creation Epic), he is Depicted as a primal being made of Fresh Water & a **Lover** of **Tiamat**, who was a creature of Salt Water. The Enuma Elish begins: "When above the **Heavens** did not yet exist nor the **Earth** below, **Apsu** the Freshwater Ocean was there, the first, the begetter, & **Tiamat**, the Saltwater Sea, she who bore them all; they were still mixing their waters, & no pastureland had yet been formed, nor even a **Reed Marsh**" (the **Red/Reed** Sea). This resulted in the birth of the younger gods, who later murder **Apsu (Eridanus)** to usurp his Lordship of the Universe. Enraged, **Tiamat** gives birth to the First Dragons, filling their bodies with "venom instead of blood", & made war upon her treacherous children, only to be slain by **Marduk (Mars)**, the God of Storms, who then forms the **Heavens** & **Earth** from her corpse.

Tanks of Holy Water in Babylonian & Assyrian Temple Courtyards were also called **Abzu (Apsû)**. Typical in Religious Washing, these tanks are identical to Judaism's Mikvot, the Washing Pools of Islamic Mosques, or the Baptismal font in Christian Churches (because all these Baptismal Fountains are Fractal Expressions of **Your Pineal** Gland Activation (Baptism) by way of the **Eridanus**, upon each **Zodiacal** Age).

ERIDAN - The River which ran through the **Underworld**. Healthy & Strong Spirits of the Dead could Drink from the River but Weak Spirits had to Drink Stale Water from Puddles & Eat Dust.

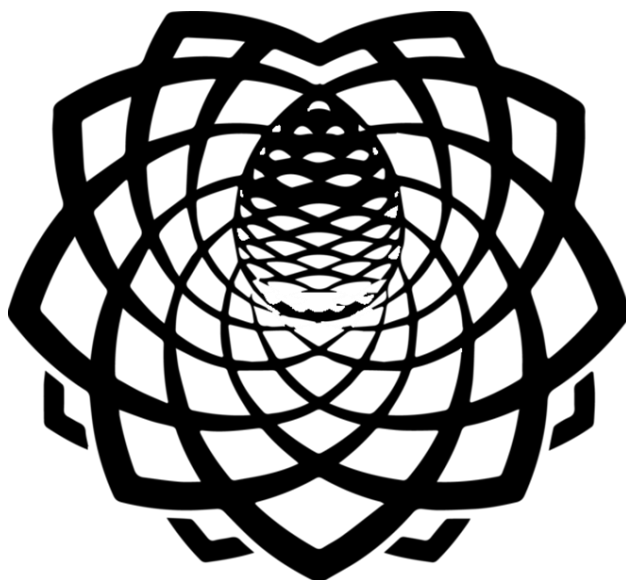
BIRDU - The Babylonian **Messenger** God (Phoenix) from the **Underworld**.

IMDUGUD - A Sumerian Version of **Anzu, Pazusu, & Zu** who tended to whip rainstorms into whirlwinds by flapping his wings. He was especially venerated in the region around the City of **Ur (Uranus)**.

ZU - An Akkadian Version of **Anzu/Imdugud**, the Storm Bird (Phoenix) who steals The Tablets of Destiny from **Enlil (Venus)**.

PAZUZU - The Sumerian Demon who was charged with Protecting Humans from Plague & the Forces of Evil. He was especially invoked for Protection of Pregnant Women & Infants against the schemes of the Evil Demoness **Lamashtu (Venus)**. Though a Force for **Good**, he was also the South & the South-East Winds which brought Pestilence & Disease.

ENBILULU - The Mesopotamian Water God charged with the care of the Tigris & Euphrates Rivers.



YOUR PINEAL IS THE IGIGI (YOUR PINEAL IS THE WATCHER)

[Etymological]: **Igi** = **Eye** in both Sumerian & Akkadian languages, & **gi** = Sexual Penetration. The Translation of **Igigi** = Sky **Eyes**, the Watchers, who Deflower:

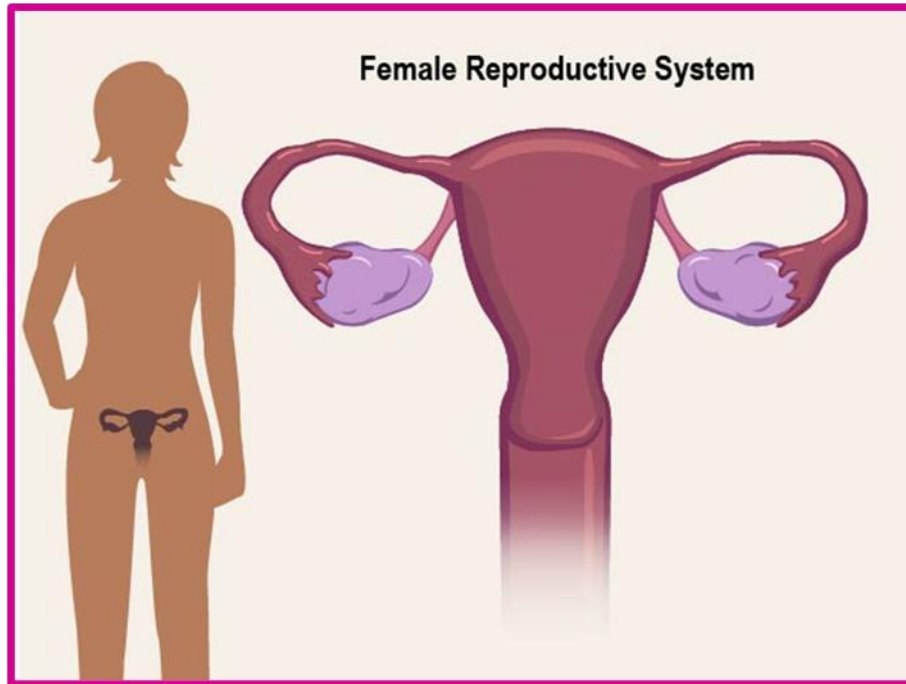


Open **Your Pineal** & **Earn Your Sky Eyes**

[East Semitic]: **IGIGI** was a term used to refer to the Gods of **Heaven**. In Many Myths the **Igigi (Pineal)** are Synonymous with the **Anunaki** (Chakras) while in others the **Igigi** were the younger gods who were servants of the **Anunaki**, until they rebelled & were replaced by the Creation of Humans.

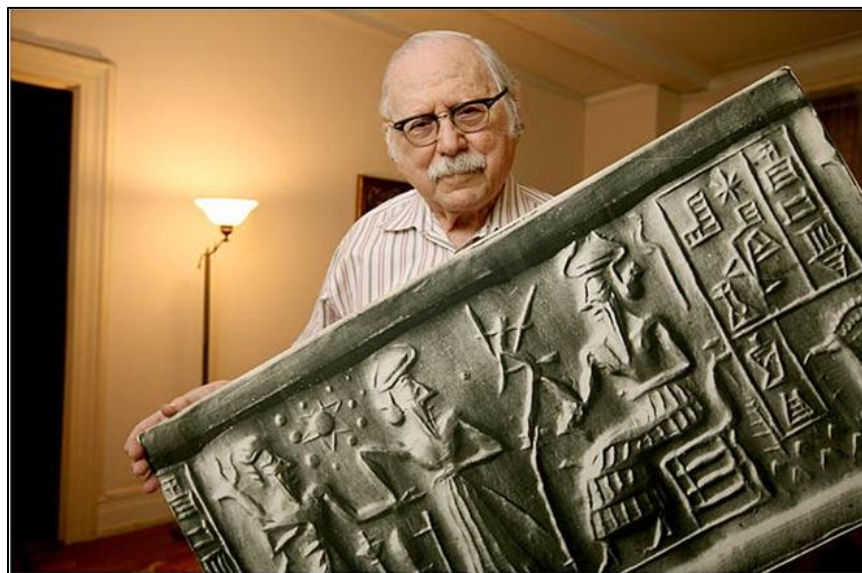
[Jewish Literature (All Versions of the Books of Enoch & the Book of Giants)]: The **Igigi** are known as the **Grigori (Egregoroi)**, meaning Watchful, Waking, Awake (WAKE UP!) Some "went down on to **Earth (Your Heart)** from the "Lord's Throne" & there married **women** & "befouled the **Earth** with their deeds", resulting in confinement **Underground [Capricorn, Cardinal Earth]**. The number of those who descended to **Earth** is generally put at **3 (Pineal Activation!)** (Δ).

[Babylonian Enûma Eliš]: There are **300 Anunaki** in **Heaven (Pineal Activation!)** (Δ) & **600 Anunaki** in the **Underworld (Capricorn, Cardinal Earth)**. The Akkadian Atra-Hasis epic says the **Igigi** are the **6th** generation of the gods who are forced to perform labor for the **Anunaki**. After **40** days, the **Igigi** rebelled & Enki (Lord **Earth**), one of the **Anunaki**, created humans to replace them.



[Anatomical]: **Your Uterus (Taurus)** is Ruled by **Enlil (Venus)**. **Your Uterus** is the Irrigation Canal.

[Akkadian]: The Myth of Atra-Hasis, the **Igigi** are Lower-Rank Deities who are put to work within Paradise (the **Garden**) Digging a Watercourse (**Your Mother's Water** Breaks & Runs the Course when **You** are Ready to be Born) by the more senior deities (the **Anunaki**). The **Igigi** then rebel against the dictatorship of **Enlil (Venus)**, setting **fire** to their tools, & surround **Enlil's (Venus')** Great House (**Libra, Cardinal Air**) (**Saturn** Exalted) by **Night** (Due **West**). Upon hearing that the reason for the disquiet is toil on the Irrigation Channel, the **Anunaki** Council (**Your** Chakras) decide to Create Man (Physically) to carry out Agricultural Labor (The Age of **Taurus** & Granting the Plow).

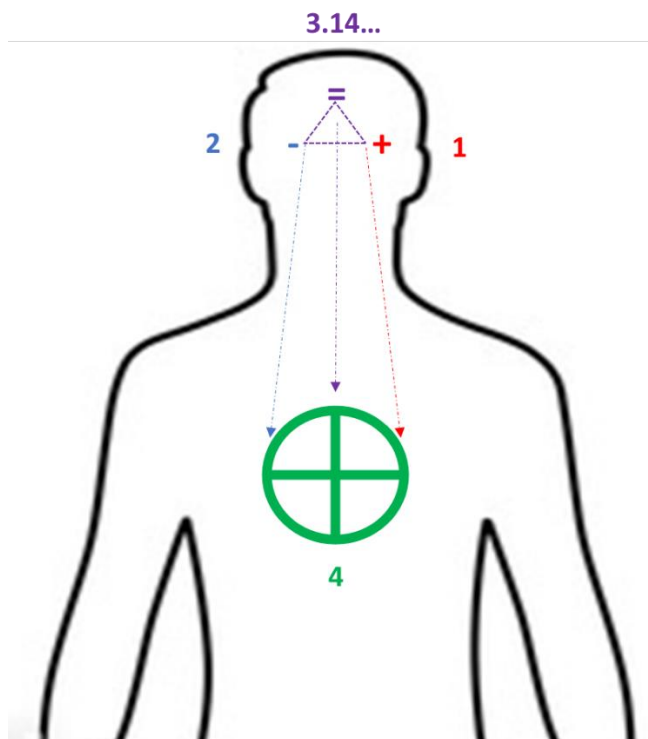


The Cow (Above) & The Plow (Below)

[Book of Genesis]: **Eve** (**Venus**) & **Satan** (**Saturn**) in the **Garden of Eden** (**Earth**) (**Your Heart**).

[First Book of Enoch]: The Watchers are Angels dispatched to **Earth** to watch over the humans. They soon begin to lust for human women &, at the prodding of their leader **Samyaza** (The Chief of Tens) (**Saturn**, Ruler of **Capricorn**, the Tenth House) (**Cardinal Earth**), defect in mass to illicitly instruct humanity & procreate the Nephilim (savage giants who pillage the **Earth** & endanger humanity).

[Second Book of Enoch]: The **Grigori** are countless **Soldiers** of human appearance, "their size being greater than that of great giants". They are located in the Fifth **Heaven** (Throat Chakra, Ruled by **Venus**) & identified as "the **Grigori**, who with their Prince **Satanail** (**Saturn**) rejected the Lord of **Light**".



Q: HOW DO I OPEN MY **IGIGI** (**SKY EYE**)?

Q: HOW DO I OPEN MY **IGIGI** (**WATCHER**)?

Q: HOW DO I OPEN MY **IGIGI** (**PINEAL**)?

[Book of Genesis]: The **Garden of Eden** (**Your Heart**) & its **Guardian** Angel **Michael** (**Your Pineal**).

[Book of **Daniel**]: **Nebuchadnezzar** says he saw "A Watcher, a Holy One, come down from **Heaven**. **Daniel** Tells him "O king: It is a decree of the Most High, which has come upon my lord the king, that **you** shall be driven from among men, & **your** dwelling shall be with the beasts of the **field**. **You** shall be made to eat grass like an ox, & **you** shall be wet with the dew of **Heaven**, & **Seven** periods of time shall pass over **you** (Chakra Activation!) till **you** know that the Most High rules the kingdom of men & gives it to whom he will.

[Understand]: **Daniel** (**Your Heart**) is Telling **Nebuchadnezzar** (**Your Pineal**) that **You** (Yes; **You** Reading this!) Must Do the Inner Work of Man (Use **Your Mind** to Balance **Your Heart** & Reflect **Your Pineal** Awake). **You** Must **EARN** THE KINGDOM. **You** Must **EARN Your SKY EYES**. Be **Good** in Thought, Deeds, & Actions. SEEK **GOD**!



PINEAL ACTIVATION!
PINEAL ACTIVATION!
PINEAL ACTIVATION!



MERCURY

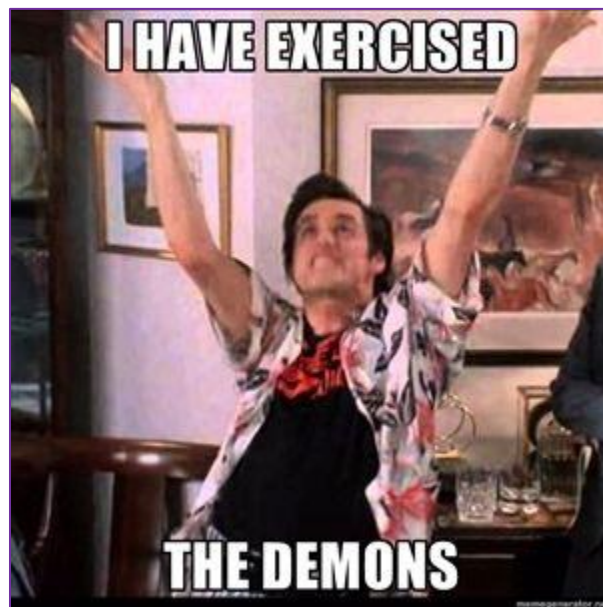
BASMU - The Mesopotamian great serpent associated, alternately, with birth & birth goddesses & with **Ningishzida (Mercury)**, a God of the **Underworld**. In his association with birth, **Basmu** is sometimes pictured horned (the glyph for **Mercury** is horned) while, as the symbol of **Ningishzida**, he is entwined around a staff or pictured as two copulating snakes.



DAMU - The city god of Girsu, east of Ur in the southern orchards' region. **Damu (Mercury)**, son of **Enki** (Lord **Earth**), was a **vegetation god**, especially of the **vernal** (East) flowing of the sap of trees & plants. His

name means "The Child," & his cult (apparently celebrated primarily by women) was centered on the lamentation & search for **Damu (Mercury)** (WAKE UP!), who had lain under the bark of his nurse, the Cedar Tree (Leo) & had disappeared (In Summer, **Mercury** visually disappears due to its proximity to the **Sun**). The search finally ended when he reappeared (on the **Vernal** Equinox) out of the river (**Eridanus**).

The Cult of **Damu (Mercury)** influenced & later blended with the similar Sumerian Cult of **Tammuz (Mercury)** the Shepherd (**Mercury** rules **Virgo**, Boötes (the Shepherd)). Another version of **Damu** was a goddess of healing & the daughter of **Nininsina (Sirius)** of Isin. **Damu (Mercury)** is credited both as Healer & Exorcist. Accordingly, **Damu** accompanies his mother **Gula/Ninkarrak (Sirius)** in incantations but is also credited as a healer in his own right: "**Damu** binds the torn ligaments."



*If **You** Have Not Opened **Your Pineal**, **You** are Possessed by **Spiritual Blindness**.*

DAMU - The Sumerian God of Healing, son of **Gula (Sirius)** (Goddess of Healing). He is considered the intermediary between his mother & mortal doctors.

DUMUZI - The Sumerian god of fertility & shepherds (**Mercury** rules **Virgo**, Boötes (the Shepherd)), who was husband to the goddess **Inanna (Venus)** & brother of **Gesht-inanna (Mercury-Venus)**. He takes **Inanna's (Venus)** place in the **Underworld** after she is trapped & killed there by **Ereshkigal (Sirius)**. **Gesht-inanna (Mercury-Venus)** then offers to take his place. He remains in the **underworld** for half the year & **Gesht-inanna (Mercury-Venus)** the other half, thus explaining the cycle of the seasons.

TAMMUZ - The Babylonian version of the Sumerian **Dumuzi/Dumuzid (Mercury)**, a vegetation, dying & reviving god figure. Along with **Gishida (Mercury)**, also a dying & reviving god figure, he guards the gates of the gods (**Your Pineal**; the **East** Gate in the Myth of **Adapa (Adam/You)**).

MUSHDAMMA - God of Architecture & Building. Appointed by **Enlil (Venus)** for responsibility over Building Projects.

MUSHHUSHSHU - The Babylonian protective spirit, featured prominently on the Ishtar Gate of Babylon, whose name translates as 'furious snake'. The **Mushhushshu** was a creature shaped like a slender dog with a scaly body & tail, bird's talons, a long neck, forked tongue & a protruding Horn (**Your Pineal**). The god who controlled the **Mushhushshu** was considered the supreme god & so many early gods were associated with this creature until, finally, it became linked with **Marduk (Mars)**.

NISABA - (also **Nissaba**, **Nidaba**, & associated with **Nanibgal**) - Originally the Sumerian goddess of **grains**, cereal & **grasses (Virgo) (Earth)**, most notably the sturdy reeds which **grew** in the canals & which scribes would use in writing (**Mercury Rules Virgo**). Consequently, **Nisaba** became the patron goddess of writing, scribes &, particularly, accounting. She **grew** in stature to become the goddess of writing & scribe of the gods. At this point she was also recognized as the mother of **Ninlil (Sud) (Sirius)** who was the wife of **Enlil (Venus, ruler of the Age of Taurus)**, supreme god of the sky. Schools were established in her name in Sumer by 2000 BCE & she was widely praised in hymns & inscriptions. She lost status during the reign of Hammurabi of Babylon (1792-1750 BCE) when she was replaced by **Nabu (Mercury)** as god of writing. Afterwards she is sometimes depicted as the wife of **Nabu (Mercury)**.

NABU (NEBO) (TUTU) - The Babylonian God of Writing & Wisdom (**Mercury**), son of **Marduk (Mars)**, & grandson of the God of Wisdom, **Enki (Ea) (Earth)**. His name means "The Announcer" in reference to his prophetic abilities & the gift of writing (**Mercury**). He was the Patron God of Scribes & safeguarded the Tablet of Destinies which legitimized the Ruler of the Universe. He is depicted holding a stylus & either riding on or standing beside a **Mushhushshu** Dragon. **Nabu** was one of the most important gods of Mesopotamia & without him, the great Babylonian Akitu Festival held to honor the gods & give thanks for the harvest (**Mercury ruling Virgo**) could not be celebrated. He was venerated for thousands of years & among the few to survive the fall of the Assyrian Empire in 612 BCE when the statues & temples of many gods were sacked by invading forces. He is often compared with the Egyptian **Thoth** & Roman **Mercury**.

NAMTAR - The Sumerian demon-god of Fate concerning **Death**, also known as the Herald of **Death**, associated with **Ereshkigal (Sirius)**. He carries messages from the **underworld** to the upper realms of the gods. He was famously insulted by **Nergal (Orion)** at the banquet thrown by the gods where he represented **Ereshkigal (Sirius)** because she could not attend. This insult results in **Nergal (Orion)** eventually falling in love with **Ereshkigal (Sirius)** & living with her in the **underworld** (1 Jan, Zenith of **Sirius (Capricorn)**), with 19 FEB, Zenith of **Orion (Aquarius)**, both signs ruled by **Saturn** in the Ancient World).

NEDU - The Babylonian Guardian of the Gates of the **Underworld** (21, 22, 23 DEC).

NETI - He is the chief gatekeeper of the **Netherworld** & the servant of the goddess, **Ereshkigal (Sirius)**. **Neti** features prominently in *The Descent of Inanna* (**Venus** is at her maximum brilliancy upon her descent on 21 SEP (**Libra**)) when he opens the **seven** gates of the realm & admits the goddess, removing one emblem of her power at the threshold of each gate until she is ultimately left naked & powerless.

NINAZU - Babylonian Healing God, son of **Gula (Sirius)**. Associated with serpents (symbols of transformation) & the **underworld** (transition). He held a staff of entwined serpents which was borrowed by both the Egyptians & the Greeks (the Caduceus, symbol of Hippocrates (Father of Medicine)).

NINGIZZIA - The Babylonian Guardian of the Gates of **Heaven** who watches over the **Eastern** Gate, the most prominent, as it is the Gate of the **Morning**.

NINGISHZIDA - A Sumerian God of the **Underworld** alternately the son of **Ereshkigal (Orion)** & **Gugullana (Sirius)** or of **Anu (Heaven)**. His symbol was the serpent **Basmu (Mercury)** entwined around a staff much like the later Caduceus of **Hermes (Mercury)**. He was known as the 'Lord of the Good Tree' & was associated with protection & fertility. Also known as **Geshida (Mercury)** &, under that name, appears with **Tammuz (Mercury)** as a **dying** & reviving god who watches the gates of the gods in the Myth of **Adapa**.

GISHIDA – The Babylonian God of the Tree of Life (Your Chakras) & early spring (21 MAR, Vernal Equinox, Balance, due East). He is a **dying** & reviving god who, with **Tammuz (Mercury)** stand guard at the gates of **Heaven (Your Pineal)** in the Myth of **Adapa (Adam)**. **Ea (Earth)** tells **Adapa (Adam)** to acknowledge the 'disappearance of two gods from the land' by way of paying respect to **Gishida (Mercury)** & **Tammuz (Mercury)** both of whom leave the **Earth** for part of the year (thus explaining the change in seasons).

GILGAMESH - The Sumerian hero of *The Epic of Gilgamesh (Mercury)* who appears as a mortal in the Sumerian King List as King of Uruk but who, in myth, is depicted as a god or demi-god. In the poem *The Huluppu Tree* (entwined serpents & staff) he is brother to the goddess **Inanna (Venus)** while in The Epic of **Gilgamesh** he is propositioned by **Inanna** (as **Ishtar (Venus)**) & rebuffs her, causing her to send the Bull of **Heaven (Taurus)** to **Earth** as punishment which results in the **death** of **Gilgamesh's** best friend & brother, **Enkidu (Heaven.Earth.Present)**. **Enkidu's death** (the **death** of Your **Heart/Earth**) then inspires **Gilgamesh (Mercury)** to embark on his quest for the meaning of **Life** & Immortality.

GUSHKIN-BANDA - The Babylonian Creator of Man & Gods who was depicted as a Craftsman; a Goldsmith.

GESHTU/GHESTU-E/WELLU/LLAWELA – A God who offered his blood & intellect for use in the creation of human beings in the Akkadian/Babylonian myth The Atrahasis. In the Epic, **We-Ilu** known as "a god who has sense" offers himself as a sacrifice to this endeavor & is killed. The goddess **Nintu (Mother Goddess)** adds his flesh, blood & intelligence to clay & creates **seven male** & **seven female** human beings.

GESHT-INANNA - The Sumerian goddess of fertility (**Mercury-Venus**) whose name means 'The Vine of **Heaven**'. Sister to **Dumuzi (Mercury)** She was in charge of the fertility of the **Earth** from the Spring (21 MAR, **Venus** Heliacal Rise) to the fall equinox (21 SEP, **Venus** Highest Brilliancy) when she would then go down to the **underworld** (21 DEC) to release **Dumuzi (Mercury)**, who had taken **Inanna's (Venus)** place, & he, then, would return to the **Earth** to oversee fertility for the next six months of the year.

UMUNMUTAMKAG - The Babylonian god of offerings who was the intermediary between human beings & the gods. He presented the sacrificial offerings to the gods in a pleasing fashion.

MUATI - An obscure local god in the Sumerian Pantheon. He is associated in some texts with the mythical Island Paradise of **Dilmun (Earth, Virgo, ruled by Mercury)** & became syncretized with **Nabu**.

MUMMU - The Babylonian God of Craftsmen. The god **Ea (Earth)** is known as **Ea Mummu** in his role as the creator of human beings. The word '**Mummu**' is understood as '**genius**' as in '**Knowing** how to Craft.'

PENEMUE (The Inside) – In Enochian Lore, a Healing Watcher who Cures the Stupidity in Man (WAKE UP!). He taught men to understand writing, & the use of ink & paper.

*"Therefore, numerous have been those who have gone astray from every period of the world, even to this day.
For men were not born for this, thus with pen & with ink to confirm their faith."*



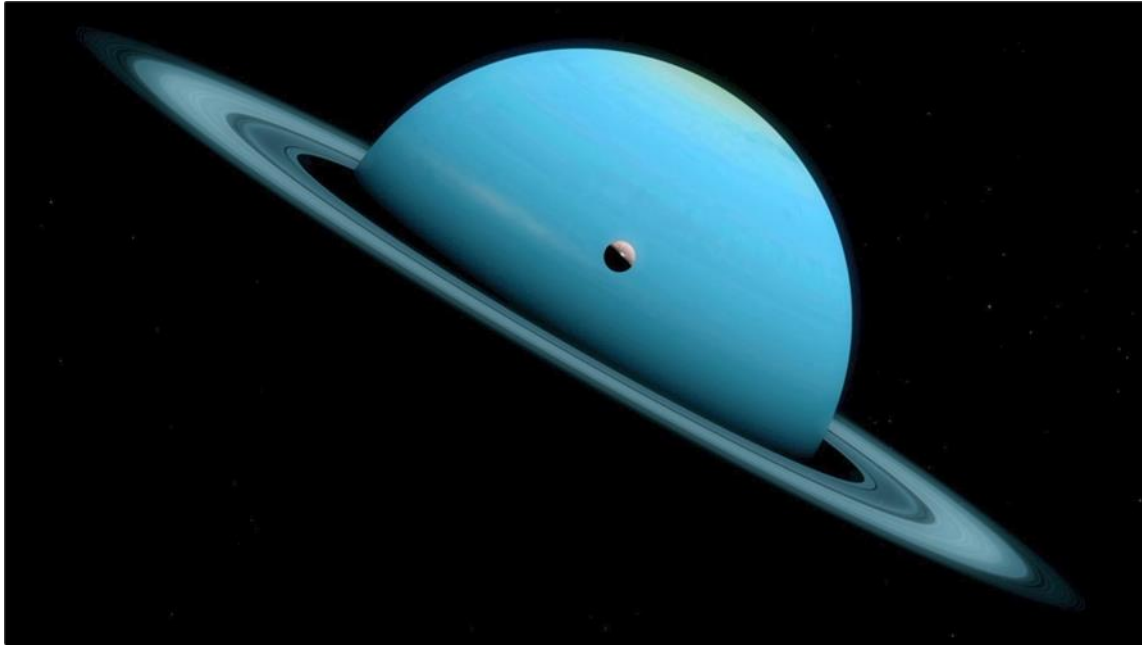
USMU - The Akkadian Messenger God of **Ea** (Sumerian **Enki**) (Lord **Earth**). He was a Two-Faced God (representing his coming & going on errands) depicted as a Birdman (a man with the risen Phoenix in his **Heart**; the Winged **Mercurius**) before **Ea** (**Earth**).

NINSHUBUR - The Sumerian Goddess of the **East** who was Friend, Confidant, Defender, Advisor, & Traveling Companion to **Inanna** (**Venus**). **Ninshubur** (**Mercury**) plays a prominent role in many of the stories concerning **Inanna** (**Venus**). In the Poem **Inanna** & the God of Wisdom she protects **Inanna** & the Sacred **Meh** (**Mercury**). In *The Descent of Inanna* she is the faithful friend who finds help to free **Inanna** from the **underworld**. A Minor Akkadian God of the same name (though often given as **Ninsubur**) appeared in some myths as minister to the god **Anu** (**Heaven**). This male deity eventually replaced the earlier goddess in the Neo-Assyrian & Neo-Babylonian periods & assumes the role of guardian.

NINSUBUR (Il-Abrat) – Akkadian Minister to **Anu** (**Heaven**), eventually assimilated into **Papsukkel**.

PAPSUKKEL (Papsukkal) - The Sumerian Minister to the General Assembly of the Gods. Associated with the Akkadian God **Ninsubur** (**Mercury**), Minister to **Anu** (**Heaven**), King of the Gods. Represented as a robed, bearded man wearing a Horned Cap (the winged cap of **Mercurius**) & holding a staff (the Caduceus).

ZAKAR/ZAQAR - The Babylonian God of Dreams (Dreams were considered Messages from the Gods). He was Responsible for sending Dream Messages to the appropriate Human Recipients. He was known to the Sumerians as **Zaqar** (**Mercury**).



URANUS (HEAVEN)

AN - **An** (Sumerian); **Anu** (Akkadian). **An/Anu** belongs to the oldest generation of Mesopotamian gods & was originally the supreme deity of the Babylonian Pantheon. Consequently, his major roles are as an authority figure, decision-maker & progenitor. In **Heaven** he allots functions to other gods & can increase their status at will. In the Sumerian poem *Inana & Ebih*, **Inana** (**Venus**) claims that "**An** (**Heaven**) has made me terrifying throughout **Heaven**." On **Earth** he confers kingship, & his decisions are unalterable.

Later **An/Anu** (**Heaven**) came to share or cede these functions, as **Enlil** (**Venus**) & subsequently **Marduk** (**Mars**) rose to prominence, but retained his essential character & high status throughout Mesopotamian history. When other gods were elevated to a position of leadership, they are said to receive the **anûtu**, the "**Anu**-Power" (**Heavenly** Power). In the *Enûma Eliš*, the gods express **Marduk's** (**Mars**) authority over them by declaring: "**Your** word is **Anu**!" (**Your** word is **Heaven**!)

An/Anu is sometimes credited with the creation of the universe itself, either alone or with **Enlil** (**Venus**) & **Ea** (**Earth**). Of the **three** levels of **Heaven** (**Pineal** Activation!), he inhabited the highest, said to be made of the **reddish** luludānitu stone.

An/Anu frequently receives the epithet "Father of the Gods," & many deities are described as his children. Inscriptions from third-millennium Lagaš name **An** (**Heaven**) as the father of Gatumdug, **Baba** (**Sirius**) & **Ningirsu** (**Orion**). In later literary texts, Adad, **Enki/Ea** (**Earth**), **Enlil** (**Venus**), Girra, **Nanna/Sin** (**Moon**), **Nergal** (**Orion**) & Šara also appear as his sons, while goddesses referred to as his daughters include **Inana/Ištar** (**Venus**), Nanaya, **Nidaba** (**Mercury**), Ninisinna, Ninkarrak, Ninmug, Ninnibru, Ninsumun, Nungal & Nusku. **An/Anu** is also the head of the **Anunaki** (**Heaven** & **Earth**) & created the demons Lamaštu, Asag, & the Sebettu (**3** = **Pineal**). In the epic *Erra* (**Orion**) & *Išum* (**Sirius**), **Anu** gives the Sebettu to *Erra* (**Orion**) as weapons with which to massacre humans when their noise becomes irritating to him.

When **Enlil** (**Venus**, ruler of the Age of **Taurus**) rose to equal or surpass **An** (**Heaven**) in authority, the functions of the two deities came to some extent to overlap. **An** was also sometimes equated with Amurru, & in Seleucid Uruk, with **Enmešara** (**Saturn**) & **Dumuzi** (**Mercury**).

Temples & shrines to **An/Anu** existed in various cities throughout Mesopotamian history. From the third millennium onwards he was worshipped, with some interruptions, together with **Inana/Ištar** (**Venus**) at the **é-an-na** temple in Uruk, & in the Achaemenid & Seleucid periods at the new Reš temple with **Antu**.

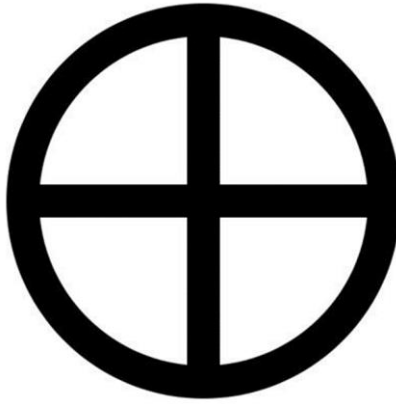
Another important center for his cult was Der, which, like Uruk, held the title "city of **Anu**". In Lagaš a temple to **An** was established by Gudea (ca. 2144-2124 BCE), while Ur-Namma (ca. 2112-2095 BCE) built a **Garden** & Shrine (a **Garden** of **Eden**) for him at **Ur** (**Uranus**). **An** also had a "seat" in the main temple of Babylon Esagil & received offerings at Nippur, Sippar, & Kish. At Assur a double temple for **Anu** & Adad, **é-me-lám-an-na**, was built during the Middle Assyrian period (ca. 1350-1050 BCE) & restored by subsequent rulers including Tiglath-Pileser I (a Nimrod).

ASSUR (**Ashur**, Akkadian; **Anshar**) - The Supreme God of the Assyrians who originated as a local deity of the city of **Ashur**. He was the Assyrian God of the Sky & of War known as The Lord of the **Whole Heavens**. His name (**Anshar**) means 'Whole Heaven'. In Akkadian & he was invoked often as a powerful ally by Assyrian Kings (whose names often contain elements of his, as in **Ashurbanipal**). He is often depicted as a feather-robed (**Your Heart Light** as a **Feather**) Archer Drawing a Bow (**Orion**) riding on a serpent or dragon (having conquered your lower-self). Much of his mythology & iconography (such as the serpent-dragon (**Mushhushshu**) of **Marduk** (**Mars**, ruler of the Age of **Aries**) or his wife **Ninlil** (**Venus**, ruler of the Age of **Taurus**) are borrowed from Sumerian or Babylonian works.

URAS/URASH - **Uraš** or **Urash**, in Sumerian mythology, is a Goddess of **Earth** & one of the consorts of the sky god **Anu** (**Heaven**). She is the mother of the goddess **Ninsun** (**Sirius**) & a grandmother of the hero **Gilgamesh** (**Mercury**). The name **Uras** even became applied to **Anu** (**Heaven**) himself, & acquired the meaning "heaven." **Ninurta** (**Orion**) was called **Uras** in later times. **Uras** (**Heaven**) became the Greek **Uranus** (**Heaven**).

ANŠAR & **KIŠAR** - **Anšar** (**Heaven**) & **Kišar** (**Earth**) are a pair of primordial gods that, with very few exceptions, only occur in *Enūma Eliš* (the Babylonian Creation Story). In Sumerian the names **Anšar** & **Kišar** literally mean "the Entirety of **Heavens**" & "the Entirety of **Earth**." They can be considered as part of an invented mythology that had the goal of creating a new cosmology for the god **Marduk** (**Mars**).

In *Enūma Eliš*, **Anšar** & **Kišar** appear as primordial gods that belong to the eldest generation of the Mesopotamian pantheon. According to *Enūma Eliš*, **Anšar** & **Kišar** gave birth to the God, whereas a late lexical list suggests that **Anu** (**Heaven**) was sometimes replaced with **Anšar** (the Entire **Heaven**). In *Enūma Eliš*, **Anšar** & **Kišar** are said to be descendants of Lahmu & Lahamu (& ultimately of the pair Apsû & Tiamat). The same text also suggests that **Anu** (**Heaven**) was their offspring.



EARTH (& HER TRIPLICITY)



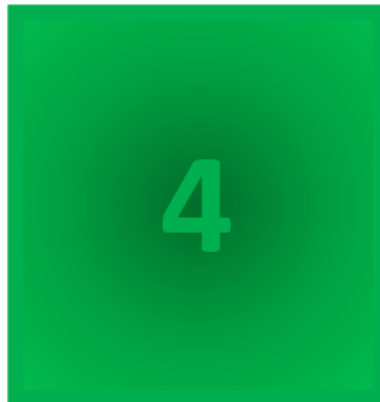
The House of **Virgo** (21 AUG – 21 SEP) is Mutable **Earth**. **Virgo** is Ruled by **Mercury**. She is the Celestial Sign of the **Virgin** Birth of the Physical **God** (Born 29 AUG). This is Mythically Reflected in the Stories of **Jesus** Christ (**Virgin** Birth), Hare Krsna (**Virgin** Birth), **Thoth** (1 **Thout** = 29 AUG) & many more.



The House of **Taurus** is (21 APR – 21 MAY) is Fixed **Earth**. **Taurus** is the Great Bull of **Heaven** & Ruled by **Venus** with the **Moon** Exalted. She is the Celestial Sign of Spring & Orgiastic **Love** (as All the **Earth** Blossoms to **Life**). She Hosts the Pleiades (the **Seven** Sisters) & the Hyades (the **Seven** Nymphs). The Pleiades are **444** **Light** Years in Distance.



The House of **Capricorn** (21 DEC – 21 JAN) is **Cardinal Earth** (**Red Earth**). **Capricorn** is Ruled by **Saturn** with **Mars** Exalted. Capricorn Heralds the New Year with the **Death** of the **Sun** on Winter Solstice (21 DEC) & the **Rebirth** of the **Sun** (25 DEC) (Christmas). The **Three** Solstitial Days In-between (22, 23, 24 DEC) the **Death** (21 DEC) & **Birth** (25 DEC) are Ruled by **Mercury**. **Capricorn** also Hosts the Acronical Rise of **Orion** & the Zenith of **Sirius** (1 JAN).



*Tiamat Fastened the Tablet to **Kingu's** Breast*

TABLET OF DESTINIES - The Sacred Object (**Your** Balanced **Heart/Earth**) which Legitimized the Rule of the Supreme God & Conferred upon their Holder the Power to Determine the Destiny of the World.

Whoever Possessed the Tablet Ruled the Universe. They were Stolen from **Enlil (Venus)** by the Anzu Bird (Phoenix) (Anzu Literally Translates as “**Your Semen**”), who was supposed to guard them, & retrieved by **Ninurta (Orion)**. In the Babylonian Enuma Elish they are given to **Kingu (Earth)** by **Tiamat (Water)** & taken from him, after his **Death**, by **Marduk (Mars)**. In the Sumerian Poem *Ninurta & the Turtle* it is the God **Enki (Earth Lord)**, rather than **Enlil (Venus)**, who holds the Tablet.

DILMUN – The Sumerian Site of Creation (Paradise!) where Utnapishtim (**Sun in Libra**) is transported to with his wife after the Great Flood. The Semitic Equivalent of both The **Garden of Eden (Your Heart)** & the Site of Noah’s Ark Resting on Dry Land (**Earth**). The Physical **Dilmun** is the Land Conquered by Sargon of Akkad, which are the Modern Lands of Southeast Saudi Arabia that encompass Bahrain, Kuwait, & Qatar.

THE GARDEN OF EDEN (GARDEN OF GOD) (GARDEN OF PLEASURE) (PARADISE) – The Birthplace of **Adam (Mars)** & **Eve (Venus)**, & of Mankind, as Described the Hebrew Books of Genesis & Ezekiel. The Garden is Described as Having **FOUR** Tributaries & where **Adam (Mars)** is Placed to **Guard** the Divine **Garden** & the Tree of **Life (Your Chakras)**.

KI – The Sumerian **Earth** Goddess, chief consort of the Sky God **An (Heaven)**. In some legends, **Ki (Earth)** & **An (Heaven)** were brother & sister, the offspring of **Anshar (Entire Heaven)** & **Kishar (Entire Earth)**. By her (**Earth**) consort **Anu (Heaven)**, **Ki (Earth)** gave birth to the **Anunaki (You, Rex Bear (How the Heck Are Ya!))**, the **Light** from **Heaven** into **your Earthly Form**, the most prominent of these deities being **Enlil (Venus)**, God of the **Air (Cardinal Air, Libra, Venus Ruled)**. The Legends say that **Heaven & Earth** were once inseparable until **Enlil (Venus)** (Who **Evens** Us) was born; **Enlil (Venus)** Cleaved **Heaven & Earth** in **two** (Cell Division). **An** carried away **Heaven**. **Ki (Earth)**, in company with **Enlil (Venus)**, took the **Earth**. She later developed into the Babylonian & Akkadian goddess **Antu**, consort of the god **Anu (Heaven)**.

KISHAR (Entire **Earth**) - The Babylonian Goddess of the **Earth** & Fertility. She is considered a mother goddess responsible for **growth** below & above the **ground**. She is the mother of **Anu (Heaven)** in some myths & associated with **Anshar (Entire Heaven)**.

KINGU/QINGU/QUINGU (**Ki = Earth**, **Ngu = My**) – **Kingu (Qingu)**, meaning "unskilled laborer," was a god in Babylonian mythology, & after the murder of his father **Abzu (Eridanus)**, the consort of the goddess **Tiamat (Venus)**, his mother, who wanted to establish him as ruler & leader of all gods before she was killed by **Marduk (Mars)**. **Tiamat (Venus)** gave **Kingu (Earth)** the **3** Tablets of Destiny (**Mercury**) (**Δ**), which he wore as a breastplate (**Earth/Heart**) & which gave him great power (**Pineal Activation!**). She placed him as the General of her Army. However, like **Tiamat (Venus)**, **Kingu (Earth)** was eventually killed by **Marduk (Mars)**. **Marduk (Mars)** mixed **Kingu's blood** with **Earth** & used the clay to mold the **first** human beings (Hello **Adam!**) while **Tiamat's (Venus)** body created the **Earth** & the Skies (**Heaven**). **Kingu (Earth)** then went to live in the **underworld** kingdom of **Ereshkigal** (1 JAN, Zenith of **Sirius**), along with the other deities who had sided with **Tiamat (Venus)**.

ARURU - The Babylonian Goddess of **Nature** & Early Mother Goddess who created human beings in consort with **Enki (Lord Earth)**, sometimes **Enlil (Venus)**.

ASHNAN - The Sumerian Goddess of **Grain**. **Ashnan (Virgo)** & her sister, **Lahar (Venus)**, were the children of **Enlil (Venus)**, born to provide sustenance to the **Anunaki (Heaven & Earth)**, the **Seven** Judges of the Dead (Chakra Activation!). It was found, however, that the **Anunaki (Heaven & Earth)** could eat none of it & so human beings were created to eat of the **grains** instead so that the efforts of **Ashnan (Virgo)** & **Lahar (Venus)** would not be wasted.

DAMKINA - The Babylonian consort to the god **Ea (Earth)**, mother of the **Marduk (Mars)**.



EA/ENKI – The Babylonian God of Wisdom & Fresh Waters, known in Sumer as **Enki** (Lord **Earth**) & introduced, or at least further developed by, the Akkadians. His Sacred Number was **40**. He was the God of Magic who defeated his Father **Apsu (Eridanus)** & created the **Earth**. **Ea/Enki** was one of the most important & beloved gods in the Mesopotamian pantheon & features prominently in the story of the Great Flood where he saves humankind by advising the good man Atrahasis (Noah) to build an ark before the waters come. & in the famous *Descent of **Inanna (Venus)*** at her Greatest Brilliancy, 21 SEP (Libra)), provides the means to rescue the goddess from the **Underworld**. He was the wisest among the gods & the patron of craftsmen, artisans & exorcists. In the story **Inanna (Venus)** & the God of Wisdom he allows himself to become drunk (**Venus** rules the Vine/Wine) & gives away the **meh (Your Balanced Mind (Heaven/Head) & Your Balanced Heart (Earth))**, the gifts of civilization & property of the gods, to **Inanna (Venus)** knowing she will disperse them to humanity. He is uniformly depicted as a friend of human beings & their advocate among the gods.

*"...you [**Enki**] are the one who has the **me** of deciding destinies, in fact you are the **me**."*

ENKIDU (EN = Lord, KI = **Earth**, DU = to Stand in the Present) - The Sumerian god of the forests & the wild. Created by the gods & sent to **Earth** to teach the proud King **Gilgamesh (Mercury)** a lesson in humility, **Enkidu** became **Gilgamesh's** best friend & brother. His **death**, following the slaying of the Bull of **Heaven (Taurus)**, is the impetus for **Gilgamesh** to embark on his quest for the meaning of **life**.

ENKIMDU (EN = Lord, KI = **Earth**, MDU = Present) - The Mesopotamian God of farmers, the fields & grain, God of canals & ditches &, like Emesh, was depicted as a farmer with plow & yoke.

ENSHAG/ENSHAGAG - Sumerian mythology was one of the eight deities born to relieve the illness of **Enki** (Lord **Earth**). He was made lord of **Dilmun** (Paradise) by **Enki** (Lord **Earth**).

HAYA - Spouse of **Nidaba/Nissaba**, Goddess of **Grain** & scribes (**Virgo** holds the **Grain**, Mutable **Earth**, ruled by **Mercury**), he is known both as a "door-keeper" (**Earth/Heart**) & associated with the Scribal Arts. In the god-list preserved on manuscripts of the first millennium he is mentioned together with **dlugal**-[ki-sá-a], a divinity associated with Door-Keepers. Already in the Ur III period **Haya** had received offerings together with offerings to the "Gate" (**Your Heart/Earth** & **Pineal (Mercury)** Electromagnetic Connection).

NINKASI (a.k.a. **Ninkar**) - The Sumerian Goddess of Alcohol, Beer & Brewing, Patron of Brewers. She was said to Brew a fresh batch of Beer every day from the finest ingredients. One of the most famous works concerning her is the Hymn to Ninkasi (c. 19th Century BCE) which is both an homage to the goddess & a recipe for brewing beer.

NINGIKUGA (Lady of the Pure Reed) - In Sumerian mythology was a Goddess of Reeds & Marshes. She was one of the consorts of **Enki** (Lord **Earth**) by whom she became the mother of **Ningal (Sirius)**, & the daughter of **An (Heaven)** & **Nammu (Mother)**.

NINKURRA (Lady Pasture) - In Sumerian mythology, was a minor mother goddess, daughter of **Enki** (Lord **Earth**) & **Ninsar (Virgo)**. Mother of **Uttu (Libra)** by **Enki** (Lord **Earth**). In an alternative tradition she was the mother (by **Enki**) of Nin-imma, the deification of the Female Sex Organs (**Virgo** the **Virgin** Mother, 180 conjunction with **Pisces**, the Vesica **Pisces**).

NINSAR (a.k.a. **Ninki** (Lady **Earth**), **Ninmah**, **Ninmu**, **Nin-shar**) - In Sumerian mythology, **Ninsar** (Nin = Lady, Sar = **Green(ery)**) is the Goddess of Plants. Her birth resulted from **Enki** (Lord **Earth**) Impregnating **Ninhursag (Sirius)** who followed a period of gestation lasting nine days (**9 = Mind**). The poet was careful to note that each day corresponds to a month in the human period of gestation; of this union is begotten the Goddess **Ninsar (Virgo)**. **Ninsar** in return is impregnated by her father & after **nine** days of gestation (**9 = Mind**) she (**Virgo**) gives birth to the Goddess **Ninkur (Virgo)**.

NINSHAR - The Sumerian Goddess of Birth & Stony Ground who, with her brother Enshar (Entire **Heaven**), encircle the **Earth** to create the horizon.

NUNBARSEGUNU – **Nunbarsegunu/Ninsebargunna/Nunbarshegum** is an obscure mother goddess & Goddess of Barley in Mesopotamian (Sumerian, Babylonian, & Akkadian) mythology. Mentioned in creation texts as the 'Old Woman of Nippur', she is identified as the mother of **Ninlil (Venus)**, the Air Goddess (**Venus** rules **Libra**, **Cardinal** Air). **Ninbarsegunu (Virgo)** instructs her daughter in the arts of obtaining the attentions of **Enlil (Venus)**.

SIDURI - The Ale-Wife in The Epic of **Gilgamesh** who advises the hero to abandon his quest for immortality & simply enjoy **life**. She is thought to symbolize the distractions in **life** from higher matters. **Gilgamesh** ignores her advice & she (**Virgo**) directs him on the path to Utnapishtim (**Libra**).



MARS

[Astrological]: **Mars** is the Ruler of **Aries** (**Cardinal Fire**) (21 MAR – 21 APR) & **Scorpio** (Fixed **Water**) (21 OCT – 21 NOV) (**Pluto** Rules Modern **Scorpio**). The Hebrew Passover Occurs in **Aries** & is where the Lamb is Slaughtered. This Jewish Tradition is connected with the Ancient Canaanite Myth of **Mot** (**Death**) Killing Ba'al **Hadad** (Lord **Mars**), where **Mot** eats Ba'al like a **Lamb**. In Christianity, the Resurrection of **Jesus** Christ is Celebrated in **Aries** (**Easter**) whereas his Persecution takes place in **Scorpio** (**Jesus Barabbas**).



Discovered in Ur (2600-2400 BCE)

The Legend of the “**Ram** Caught in the Thicket” is common to all **Semitic** races, & is recorded in many tablets & carvings of Chaldea (Ur), Babylon & Assyria, dating back to between 2000-4000 BCE. It is older even than that, & dates back to primitive days on the Iranian plateau, when wild **rams** were caught & sacrificed to ensure fertility to the flocks.

A copper **ram**, entangled by its horns in a copper bush, has been excavated from an ancient temple site in Chaldea. This sacrificial **ram**, therefore, had become symbolized about 3000-4000 BCE Chaldea, as a “gift provided by the gods.”

Wild **sheep** lived among the bare open hills of the Iranian plateau, & exist there to the present day. Wild **sheep** are never found in country covered with trees or with scrub or bushes, which would afford cover to their numerous enemies to stalk them. They keep strictly to open hill-sides, & are very watchful & wary, & travel at great speed when alarmed. To catch a wild **ram** would be a rare & difficult feat, & a captured **ram** would be a worthy specimen for sacrifice to the gods of Neolithic man. The few that could be captured would mostly be very young ones, & they would be kept in captivity until grown up.

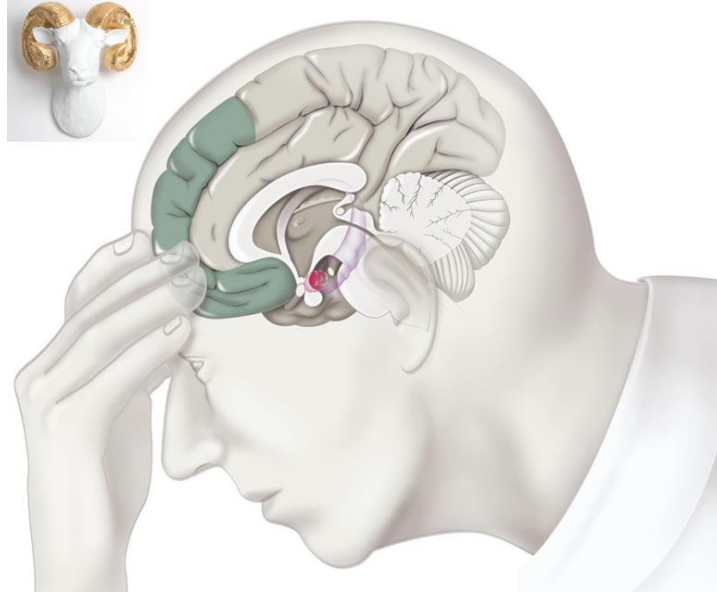
The ancient word jangal (jungle) in Pashtu & Persian means “desolate & uninhabited & uncultivated country.” Most of the mountainous “jangal” country in Persia, Afghanistan, & Baluchistan is treeless, & without scrub or bushes; whereas the jungle (uninhabited & uncultivated land) in flat, or better watered countries, such as the plains of India, or such as the foot-hills which lie between the alluvial valley of the Tigris & the mountains of Persia, are covered with scrub & with trees; but no wild **sheep** can live there.

Wild **rams** caught on the Iranian plateau & taken to the Chaldean temples would be described as “very rare wild **rams**,” or “**rams** caught in the jangal.” To the Chaldeans the word jangal conveyed the idea of trees & bushes, just as in India the word jangal (jungle) conveyed this idea. Hence to the Chaldean priest, “A **ram** caught in the jangal” = “A **ram** caught in a thicket” = “A **ram** entangled by its big horns in a bush.”

This allegory symbolizes the abolition in Mesopotamia by the early Sumerian rulers of the cult of **Dammuz (Mercury)** & human sacrifices. The “miraculously provided” **rams** were an inducement to the people to accept the substitution of their children.

The Old Testament version of this great reform (**Abraham**, Isaac, & the **ram** caught in the thicket) dates from the period of the Captivity in Chaldea, when the old Jewish traditions & writings were revised & rewritten. It is the old Chaldean allegory in a Jewish setting.

The Moabites, Edomites, & other pastoral races who lived in & around Palestine, were of the same race as the Hebrews, spoke a similar language, & wrote inscription in the same script as the primitive Hebrew. The Moabite stone inscription proves this. It is the inscription of **Mesha** (Persian for **Sheep**), the Moabite **shepherd** king, who revolted against the King of Israel, after his people had paid tribute for **Forty** Years (**Heart**). The inscription begins: “I am **Mesha (Sheep)**, the son of Khamoshgad (**Ram** Sacrificer), the Dibonite.” He describes how, being attacked & hard-pressed by the King of Israel, he saved his kingdom, & drove back the invaders, by the help of his god Khamosh, to whom he offered up a great sacrifice. He then rebuilt his city. The story is mentioned in the Old Testament, & the great sacrifice of **Mesha** consisted of his own son, whom he sacrificed as a burnt offering on the wall of the besieged city.



Mesha (Mercury), Sacrifice this **Ram**!

MARDUK - The Babylonian King of the Gods who defeated **Tiamat (Venus)** & the Forces of Chaos & brought Order to the Universe (Ordo Ab Chao) which the Gods & Humans worked together to maintain. He is the God of Healing, Justice, Compassion, Regeneration, Magic & Fairness. He was known as the Peacekeeper among the Gods & was referred to, in this regard, as 'Shepherd of the Gods' (**Aries**, the **Lamb/Sheep**, ruled by **Mars**). In the Epic of **Irma (Orion/Saturn)**, **Marduk (Mars)**, Exalted in **Capricorn** leaves the city of Babylon in the hands of **Nergal (Irma, Erra) (Orion/Saturn)** who destroys it in a **rage**. **Marduk (Mars)** was one of the most popular & enduring Mesopotamian Gods & was adopted by the Assyrians as son of their Supreme God, **Assur (Heaven)**.

AMARRU (MARTU) - Akkadian & Sumerian texts listed as the god of the Amorite/Amurru people, often forming part of personal names. He is sometimes called **Ilu Amurru (DMAR.TU)**. He was the patron god of the Mesopotamian city of Ninab whose exact location is unknown. He was originally a Western Semitic God. He is sometimes described as a **Shepherd (Aries)** or as a Storm God & as a son of **Anu (Heaven)**. He is sometimes called Bêl Šadê 'Lord of the Mountain' (**Your Pineal**); 'He who Dwells on the Pure Mountain' (**Your Pineal**); & 'Who Inhabits the Shining Mountain' (**Your Pineal**). In Cappadocian Zinçirli inscriptions he is called 'the God of my Father'.

Accordingly, Bêl Šadê is the same as the Biblical 'Ēl Šaddāi who is the God of **Abram (Father Ram) (Aries)**, Isaac & Jacob (**Heels/Feet of Pisces**) in the "Priestly source" of narrative. Bêl Šadê also became the fertility-God Ba'al (Lord) possibly adopted by the Canaanites, a rival & enemy of the Hebrew God **Yhwh**, & famously combatted by the Hebrew prophet **Elijah (Lord Yhwh)**.

Amurru was also a storm-god. **Amurru** (like **Adad**) bears the epithet **Ramān** (Thunderer), Bāriqu (Hurler of the Thunderbolt) & **Adad** ša a-bu-be (**Adad** of the Deluge). His iconography is distinct from that of **Adad**, & he sometimes appears alongside **Adad** with a Baton of Power or Throwstick, while **Adad** bears a Thunderbolt.



BOOOOOOOOOOOOOOM!!!

ADAPA - **Adapa** (You, the **First Man**, the Great One that descends upon the beginning of the Great Year) was an Important Mesopotamian Mythical Figure who unknowingly refused the Gift of Immortality. His name would be used to invoke power in exorcism rituals. He also became an archetype for a wise ruler. His name was invoked to evoke favorable comparisons.

The story, commonly known as **Adapa & the South Wind** is known from fragmentary tablets from Tell el-Amarna in Egypt from Egyptian King Amenophis IV (1377-1361 BC) & from the Library of Ashurbanipal, Assyria (c. 7th century BCE). There are differences in several of the known versions of the text.

Adapa was a Mortal Man, a Sage/Priest of the Temple of **Ea (Earth)** in the City of **Eridu (Eridanus)**. He was Given the Gift of Great Wisdom by the God **Ea (Earth, Your Heart)** but not Eternal **Life**. While carrying out his duties, he was fishing the Persian Gulf. The Sea became rough by the Strong Wind, & his Boat was capsized. Angry, **Adapa** "Broke the Wings of the South Wind" preventing it from blowing for **Seven** days (Chakras). The God **Anu (Heaven)** called **Adapa (Mars)** to account for his action, but the God **Ea (Earth)** aided him by Instructing **Adapa (Mars)** to gain the Sympathy of **Tammuz (Mercury)** & **Gishzida (Mercury)**, who **Guard** the **Gates** of **Heaven (Pineal Activation!)** & not to eat or drink there, as such food might kill him. When offered garments & oil, he should put on the clothes & anoint himself.

Adapa put on mourning garments, & when he met **Tammuz** & **Gishzida** (both **Mercury**), he claims to be in mourning because they have disappeared from the land (**You Lost Your Pineal Connection with God**). **Adapa** is then offered the "Food of **Life**" (**Light**) & "Water of **Life**" (**Light**) but will not Eat or Drink. Then Garments & Oil are offered, & he does what he had been told. He is brought before **Anu (Heaven)**, who asks why he will not eat or drink. **Adapa (Mars)** replies that **Ea (Earth)** told him not to. **Anu (Heaven)** laughs at **Ea's (Earths)** actions, & passes Judgment on **Adapa** by asking rhetorically, "What ill has he brought on mankind?" He adds that consequently men will suffer disease. **Adapa** is then sent back down to **Earth**.

Adapa is also associated with King Enmerkar. In the portions of the fragmented story that are known, **Adapa** & Enmerkar descend **Nine** Cubits Down (**Your Mind**) into the **Earth (Your Heart)** & are involved in

breaking into an Ancient Tomb (Your Heart). What happens in there not clear, but the outcome is that they leave & Reseal the Tomb.

ADAM (The **First Man**) – The Judeo-Christian & Muslim Progenitor listed in the Hebrew Book of Genesis & in the Quran for the **First Man** created by God. **Adam** is also used in a collective sense as "**mankind**" (the many effulgences of you) & individually as "a human" (**one of you**). Biblical **Adam** (**man, mankind**) is created from **Adamah** (**Earth**) (**Cardinal 'Red' Earth, Capricorn, Mars** Exalted). Genesis 1-8 makes considerable play of the bond between them, for **Adam** is estranged from the **Earth** (**Your Heart**) through his disobedience (**You** became **Ungrounded** & Lost **Your Electromagnetic Pineal** Connection with the Creator). In the Holy Kabbalah, this is Metaphysically Encoded within the Motif of **Adam's** Divorcement from **God**, or **God's** Divorcement from **Adam**.

ADAD/HADAD - **Adad, Haddad** (Akkadian), **Hadad** (Ugaritic), or **Iškur** (Sumerian) was the Storm & Rain God in the Northwest Semitic & ancient Mesopotamian religions. He was attested in Ebla as "**Hadda**" (c. 2500 BCE). From the Levant, **Hadad** was introduced to Mesopotamia by the Amorites, where he became known as the Akkadian (Assyrian-Babylonian) God **Adad**. **Adad** (**Mars**) & **Iškur** (**Ishtar, Venus**) are usually written with the same symbol used for the Hurrian god **Teshub**. **Hadad** was also called "**Pidar**", "**Rapiu**", "**Baal-Zephon**", or often simply **Ba'al** (Lord), but this title was also used for other gods. The **bull** was the symbolic animal of **Hadad** (**Venus**, ruler of **Taurus**). He appeared bearded, often holding a club & thunderbolt while wearing a bull-horned headdress.

Though originating in northern Mesopotamia, **Adad** (**Mars**) was identified by the same Sumerogram that designated **Iškur** (**Ishtar/Venus**) in the south. His worship became widespread in Mesopotamia after the First Babylonian dynasty. A text dating from the reign of Ur-Ninurta characterizes **Adad/Iškur** (**Adam/Eve**) as both threatening in his stormy rage & generally life-giving & benevolent.

The form **Iškur** (**Venus**) appears in the list of gods found at Shuruppak but was of far less importance, probably partly because storms & rain were scarce in Sumer & agriculture there depended on irrigation instead. The gods **Enlil** (**Venus**) & **Ninurta** (**Orion/Capricorn/Saturn**) also had storm god features that decreased **Iškur's** (**Venus'**) distinctiveness. He sometimes appears as either's assistant or companion.

When **Enki** (Lord **Earth**) distributed the destinies, he made **Iškur** (**Venus**) Inspector of the Cosmos. In one litany, **Iškur** (**Venus** Rules **Taurus**) is proclaimed again & again as "Great Radiant **Bull**, **Your** Name is **Heaven**" & also called son of **Anu** (**Heaven**), lord of Karkara; twin-brother of **Enki** (**Venus** is the Twin of **Earth**), Lord of Abundance, Lord who Rides the Storm, Lion of **Heaven**. In other texts, **Adad/Iškur** is sometimes son of the **Nanna/Sin** (**Moon**) by **Ningal** (**Sirius**) & brother of **Utu/Shamash** (**Sun** in **Libra**, ruled by **Venus**) & **Inanna/Ishtar** (**Venus**). **Iškur** (**Venus**) is also sometimes described as the son of **Enlil** (**Venus**).

The **Bull** (**Taurus**) was portrayed as **Adad/Iškur's** Sacred Animal starting in the Old Babylonian Period (the first half of the 2nd millennium BCE). **Adad/Iškur's** consort (both in early Sumerian & the much later Assyrian texts) was **Shala/Sala** (**Venus**) a Grain Goddess, who is also associated with the god **Dagānu** (**Dagan/Venus**). She was also called **Gubarra** in the earliest texts. The fire god **Gibil** (named **Gerra** in Akkadian) is sometimes the son of **Iškur** (**Venus**) & **Shala** (**Venus**).

In the earliest extant sections of the **Ba'al** Cycle, there appears to be a feud between **El** (**Venus**) & **Ba'al** (**Mars**). **El** (**Venus**) makes one of his sons who is called both prince **Yamm** ("Sea") & Judge **Nahar** ("River") (**Eridanus**) king over the gods & changes **Yamm's** (**Venus'**) name from **yw** (so spelled at that point in the

text) to mdd 'il, meaning "Darling of El." **El (Venus)** informs **Yamm (Venus)** that in order to secure his power, **Yamm (Venus)** will have to drive **Ba'al (Venus)** from his throne.

In this battle, **Ba'al (Mars)** is somehow weakened, but the Divine Craftsman Kothar-wa-Khasis (**Mercury**) strikes **Yamm (Venus)** with two magic clubs, **Yamm (Venus)** collapses, & **Ba'al (Mars)** finishes the fight. **Atthart (Venus)** proclaims **Ba'al's (Mars')** victory & salutes **Ba'al Hadad (Lord Mars)** as "Rider on the Clouds," a phrase applied to **Yahweh** in Psalm 68:4. At **Atthart's (Venus')** urging **Ba'al (Venus)** "scatters" **Yamm (Venus)** & proclaims that **Yamm** is dead & heat is assured.

A palace is built for **Ba'al Hadad (Lord Mars)** with cedars from Mount Lebanon & Sirion, & also from Silver & from Gold. In his new palace **Ba'al (Mars)** hosts a great feast for the other gods. When urged by Kothar-wa-Khasis, **Ba'al (Mars)** somewhat reluctantly, opens a window in his palace & sends forth Thunder & Lightning. He then invites **Mot 'Death' (Saturn)** (God of Drought & **Underworld**), another son of **El (Venus)**, to the feast.

But **Mot (Saturn)** is insulted. The Eater of Human Flesh & Blood will not be satisfied with Bread & Wine. **Mot (Saturn)** threatens to break **Ba'al (Mars)** into [14] pieces & swallow him. Even **Ba'al (Mars)** cannot stand against **Death (Saturn)**. By the advice of the goddess **Shapsh (Sun)**, **Ba'al (Mars)** has intercourse with a Heifer (**Taurus**) & dresses the resultant calf in his own clothes as a gift to **Mot (Saturn)** & then himself prepares to go down to the **Underworld** in the guise of a helpless shade. News of **Ba'al's (Mars')** apparent **death** leads even **El (Venus)** to mourn. **Anat (Venus)**, **Ba'al's (Mars')** sister, finds **Ba'al's (Mars')** corpse, presumably really the **dead** body of the calf, & she buries the body with a funeral feast. The God **Athtar (Venus)** is appointed to take **Ba'al's (Mars')** place, but he is a poor substitute. Meanwhile **Anat (Venus)** finds **Mot (Saturn)**, cleaves him with a sword, burns him with fire, & throws his remains on the field for the birds (Aquila) to eat. But the **Earth** is still cracked with drought until **Shapsh (Sun)** fetches **Ba'al (Mars)** back. **Seven** years later **Mot (Saturn)** returns & attacks **Ba'al (Mars)** in a battle which ceases only when **Shapsh (Sun)** tells **Mot (Saturn)** that **El (Venus)** now supports **Ba'al (Mars)**. Thereupon **Mot (Saturn)** at once surrenders to **Ba'al Hadad (Lord Mars)** & recognizes **Ba'al (Lord Mars)** as king.

In the 2nd Millennium BCE, the King of Yamhad or Halab (modern Aleppo) received a statue of **Ishtar (Venus)** from the King of Mari, as a sign of deference, to be displayed in the temple of **Hadad (Mars)** located in Halab Citadel. The king of Aleppo called himself "the beloved of **Hadad**". The God is called "God of Aleppo" on a stele of Assyrian king Shalmaneser I.

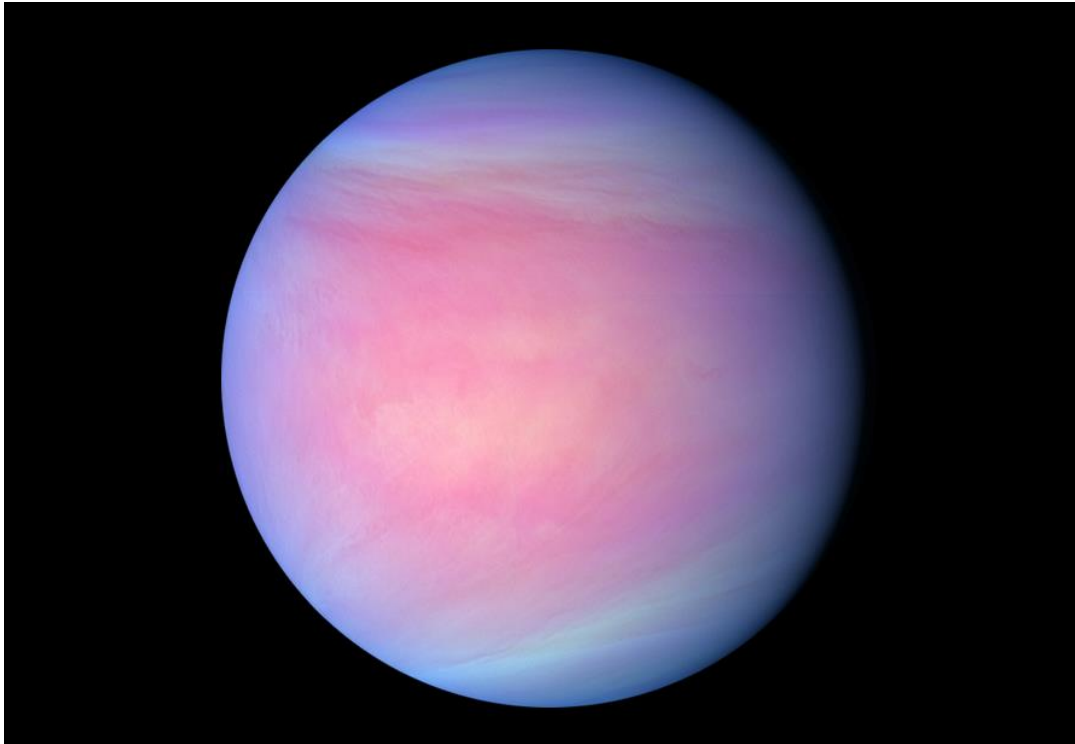
RAMMAN (Rimmon) - The Akkadian & Sumerian Storm God associated with both **Adad (Mars)** & **Nintur (Sirius)**, mentioned in The Epic of **Gilgamesh**. In Akkadian, **Adad** is also known as **Rammanu** (Thunderer) cognate with Aramaic **Ra'mā** & Hebrew **Ra'am**, which was a byname of **Hadad (Mars)**.

Ramman is a Hindu Religious Festival & Ritual Theatre of the Garhwal Region, in the Saloor Dungra Village of the Painkhanda Valley in the Chamoli district in Uttarakhand, India. The festival & the eponymous art form are conducted as an offering to the village deity, Bhumiya Devta, in the courtyard of the village temple. The **Ramman** is unique to the village & is neither replicated nor performed anywhere else in the Himalayan region.

He is the guardian deity of Saloor Dungra is Bhumichetrapal, also known as Bhumiya Devta. The festival is held in her honor every year after Baisakhi, a harvest festival that also marks the beginning of the Hindu **Solar** New Year (~15 APR (**Aries**), when the **Sun** Rises on the **Solar** Analemma). On the day of Baisakhi, the village priest announces the date for the **Ramman** Festival which falls on the ninth or the eleventh day

after Baisakhi. The festival lasts for ten days during which time the local epic of **Rama** is sung & masked dances depicting different aspects of life take place in the courtyard of the Bhumiya Devta's temple. The Jagar is sung by the Jagaris or Bhallas of the Rajput caste who are professional bards.

ZABABA - The Akkadian God of **War (Mars)**. He was one of the many consorts of **Inanna/Ishtar (Venus)**.



VENUS

Venus is the Brightest Planet. She is called Both the Morning Star (**Aries**, Due **East**) & Evening Star (**Libra**, Due **West**). **Venus** is also known as the Twin of **Earth**, as she is almost the same size & also the closest planet to **Earth**. **Venus** spins very slowly as she orbits the **Sun**, & is unusual because she rotates in a direction opposite that of all of the other planets. She is covered in Opaque Clouds that give her the Resemblance of a Pearl. **Venus** Rules **Taurus** (21 APR – 21 MAY), **Libra** (21 SEP – 21 OCT), & is Exalted in **Pisces** (21 FEB – 21 MAR).

ANAT – **Anat/Anath** is a major northwest Semitic Goddess. **Anat's** titles used again & again are "Virgin 'Anat" & "sister-in-law of the peoples" (or "progenitress of the peoples" or "sister-in-law, widow of the Li'mites"). In the Ugaritic Ba'al Cycle (Lord's Cycle) 'Anat (**Venus**) is a Violent War-Goddess, a Maiden who is the Sister & the **Lover** of the Great God Ba'al **Hadad** (Lord **Mars**). Ba'al (Lord) is usually called the son of **Dagan (Venus)** & sometimes the Son of **El (Venus)**, who addresses **Anat (Venus)** as "daughter."

Anat (Venus) boasts that she has put an end to **Yam (Venus)**, the darling of **El (Venus)**, to the **Seven-Headed Serpent** (Chakras), to Arsh, the darling of the gods, to **Atik (Taurus)** (Quarrelsome), the calf of **El (Venus)**, to **Ishat** (Fire), "The Bitch of the Gods", & to **Zabib** (Flame) the daughter of **El (Venus)**. Later, when Ba'al (Lord **Mars**) is believed to be dead, she seeks after Ba'al "like a cow for its calf" & finds his body (or supposed body) & buries it with great sacrifices & weeping. 'Anat (**Venus**) then finds **Mot**

(**Saturn**), Ba'al Hadad's (Lord **Mars**) supposed slayer & she seizes **Mot**, splits him with a sword, winnows him with a sieve, burns him with fire, grinds him with millstones & scatters the remnants to the birds.

Text CTA 10 tells how '**Anat** (**Venus**) seeks after Ba'al (Lord **Mars**) who is out hunting, finds him, & is told she will bear a steer to him (**Taurus**). Following the birth she brings the new **calf** to Ba'al on Mount Zephon.

In the North Canaanite story of **Aqhat** (**Orion**), son of the Judge **Danel** (**Dn'il**) (Your **Heart**) is given a Wonderful Bow & Arrows which was created for '**Anat** by the Craftsman God Kothar-wa-Khasis (**Mercury**) but which was given to **Danel** (**Earth**) for his infant son as a gift. When **Aqhat** (**Orion**) grew to be a young man, '**Anat** (**Venus**) tried to buy the bow from **Aqhat** (**Orion**), offering even immortality, but **Aqhat** (**Orion**) refused all offers, calling her a liar because old age & death are the lot of all men. He then added to this insult by asking 'what would a woman do with a bow?'

Like **Inanna** (**Venus**) in the Epic of **Gilgamesh**, '**Anat** (**Venus**) complained to **El** (**Venus**) & threatened **El** (**Venus**) himself if he did not allow her to take vengeance on **Aqhat** (**Orion**). **El** (**Venus**) conceded. '**Anat** (**Venus**) launched her attendant Yatpan (Aquila) in hawk form against **Aqhat** (**Orion**) to knock the breath out of him & to steal the bow back. Her plan succeeded, but **Aqhat** (**Orion**) is killed instead of merely beaten & robbed. In her rage against Yatpan, (text is missing here). Yatpan runs away & the Bow & Arrows fall into the sea. All is lost. '**Anat** (**Venus**) mourned for **Aqhat** (**Orion**) & for the curse that this act would bring upon the land & for the loss of the bow. The focus of the story then turns to **Paghat** (**Sirius**), the wise younger sister of **Aqhat** (**Orion**). She sets off to avenge her brother's **death** & to restore the land which has been devastated by drought as a direct result of the murder. The story is incomplete. It breaks at an extremely dramatic moment when **Paghat** (**Sirius**) discovers that the mercenary whom she has hired to help her avenge the **death** is, in fact, Yatpan, her brother's murderer. The parallels between the story of '**Anat** (**Venus**) & her revenge on **Mot** (**Saturn**) for the killing of her brother (**Orion**) are obvious.

Rahmay ('The Merciful'), co-wife of **El** (**Venus**) with **Athirat** (**Venus**), is also the goddess '**Anat**. Use of dual names of deities in Ugaritic poetry are an essential part of the verse form, & that two names for the same deity are traditionally mentioned in parallel lines. In the same way, **Athirat** is called **Elath** (meaning "The Goddess") in paired couplets. The poetic structure can also be seen in early Hebrew verse forms.

Anat (**Venus**) first appears in Egypt in the 16th dynasty (the Hyksos Period) along with other northwest Semitic deities. She was especially worshiped in her aspect of a war goddess, often paired with the goddess **Ashtart** (**Venus**). In the Contest Between **Horus** (**Sun**) & **Set** (**Saturn**), these two goddesses appear as daughters of **Re** (**Sunset**) & are given as allies to the God **Set** (**Saturn**), who had been identified with the Semitic God **Hadad** (**Mars**).

During the Hyksos period, **Anat** (**Venus**) had temples in the Hyksos capital of Avaris & in Beth-Shan (Israel) as well as being worshipped in Memphis. On inscriptions from Memphis (15th to 12th Centuries BCE), **Anat** (**Venus**) is called "Bin-**Ptah**", Daughter of **Ptah** (**Jupiter**). She is associated with Reshpu (Canaanite: Resheph) in some texts & sometimes identified with the native Egyptian goddess Neith "the **Cow** of **Heaven**". She is sometimes called "Queen of **Heaven**". She is usually shown carrying various weapons.

In the New Kingdom, Ramesses II made '**Anat** (**Venus**) his personal guardian in battle & enlarged **Anat**'s temple in Pi-Ramesses. Ramesses named his daughter (whom he later married) Bint-**Anat** 'Daughter of **Anat**'. His dog appears in a carving in Beit el Wali temple with the name "**Anat**-in-vigor" & one of his horses was named '**Ana**-herte '**Anat**-is-satisfied'.

Antu (Venus) appears in Akkadian texts mostly as a rather colorless consort of **Anu (Heaven)**, the mother of **Ishtar (Venus)** in the **Gilgamesh** story, but is also identified with the northwest Semitic goddess '**Anat**'. The parallelism between the names of the Sumerian Goddess, **Inanna (Venus)**, & her West Semitic counterpart, **Ishtar (Venus)**, continued in Canaanite tradition as **Anath (Venus)** & **Astarte (Venus)**, particularly in the poetry of Ugarit. The two goddesses were invariably linked in Ugaritic scripture & are also known to have formed a triad (known from sculpture) with a third goddess who was given the name/title of Qadesh (The Holy One).

In Elephantine (modern Aswan) in Egypt, the 5th Century BCE Elephantine Papyri make mention of **Anat-Yahu (Anat-Yahweh)** (both **Venus**) worshiped in the temple to **Yahweh (Venus)** originally built by Jewish refugees from the Babylonian conquest of Judah. These suggest that "even in exile & beyond the worship of a female deity endured." The texts were written by a group of Jews living at Elephantine near the Nubian border, whose religion has been described as "nearly identical to Iron Age II Judahite religion". The papyri describe the Jews as worshipping **Anat-Yahu** (or **AnatYahu**) (both **Venus**). **Anat-Yahu** (both **Venus**) is described as either the wife (or paredra, sacred consort) of **Yahweh (Venus)** or as a hypostatized aspect of **Yahweh (Venus)**.

The goddess **Atah (Venus)** worshipped at Palmyra is identical with **Anat (Venus)**. **Atah (Venus)** was combined with **Ashtart (Venus)** under the name **Atar (Venus)** into the goddess **Atar'atah (Venus)** known to the Hellenes as **Atargatis (Venus)**. **Atargatis** is effectively a combining of '**Ashtart**' & '**Anat**'. The Indo-Iranian **Anahita (Venus)** meaning 'immaculate' in Avestan is a variant of **Anat (Venus)**. In the Book of Zohar, **Anat (Venus)** is numbered among the holiest of angelic powers under the name of **Anathiel**.

ALLAT (Allatu, Alilat, Allāt, & al-Lāt) is a name & title used to refer to multiple goddesses worshipped in the ancient Near East, including the Semitic goddesses **Asherah (Heaven)** & **Athirat (Venus)** & the pre-Islamic Arabian goddess worshipped alongside **Manāt (Venus)** & al-'Uzzá throughout the entire peninsula, including Mecca. The word **al-Lat** was used as a name & title for multiple pre-Islamic goddesses of Arabia & was used for either a wife of **Allah (Venus)** or a daughter depending on the region. It has been hypothesized that **Allat (Venus)** is the consort of **Allah (Venus)** based on the fact that it is typical of deities in that area of the world to have consorts. It was used as a title for the goddesses **Asherah (Heaven)** & **Athirat (Venus)**. The word is akin to **Elat (Venus)**, which was the name of the wife of the Semitic deity **El (Venus)**.

The Etymology best reflecting the Arab lexicographical tradition derives the name from the verb **latta** (to mix or knead barley-meal). It has also been associated with the "idol of jealousy" (**Venus** is the Jealous Planet) erected in the temple of Jerusalem according to the Book of Ezekiel, which was offered an oblation of barley-meal by the husband who suspected his wife of infidelity (Yes, **Venus**). It can be inferred from al-Kalbi's Book of Idols that a similar ritual was practiced in the vicinity of the idol of **al-Lat**. The second etymology, which is more in line with Semitic traditions in general, takes **al-Lat (Venus)** to be the feminine form of **Allah (Venus)**.

According to records from the Islamic period, the tribe of Banu Thaqif in Ta'if especially holds reverence to **Allat (Venus)**. Under Greco-Roman influence, her iconography began to show the attributes of Athena (the Greek Goddess of **War**) & her Roman equivalent **Minerva (Mercury)**. In Islam, her worship ended when her shrine in Ta'if was demolished on the orders of **Muhammad** (HOW IRONIC IS IT TO **KNOW** THAT THE PROPHET **MUHAMMED** DESTROYED THE SHRINE OF **ALLAH**?!)

ALLATU (Allatum) - An **Underworld** goddess modeled after the Mesopotamic Goddess **Ereshkigal (Sirius)** & worshipped by western Semitic peoples, including the Carthaginians. She is equated with the Canaanite Goddess **Arsay (Venus)**.

ALU - In Akkadian & Sumerian mythology, **Alû** is a vengeful spirit of the Utukku that goes down to the **Underworld Kur (Capricorn)**. The Demon has no Mouth, Lips, or Ears (Total Silence). It roams at night & terrifies people while they sleep, & possession by **Alû** results in Unconsciousness & Coma. In this manner it resembles creatures such as the mara (Incubus) which are invoked to explain sleep paralysis. In Akkadian & Sumerian Mythology, it is associated with other demons like **Galla/Gallu (Sirius)** & **Lilu (Lilith/Venus)**.

ANTU - In Akkadian mythology, **Antu** or **Antum** is a Babylonian Goddess. She was the first consort of **Anu (Heaven)**, & the pair were the parents of the **Anuna** (Chakras) & the **Utukki** (Charkras). **Antu (Venus)** was a dominant feature of the Babylonian Akita Festival until as recently as 200 BCE, her later pre-eminence possibly attributable to identification with the Greek goddess **Hera (Venus)**. **Antu (Venus)** was replaced as consort by **Ishtar** or **Inanna** (both **Venus**), who may also be a daughter of **Anu (Heaven)** & **Antu (Venus)**. She is similar to **Anat (Venus)**.

ARSAY - Goddess of the **Underworld (Pisces)** worshipped by the Canaanites. According to texts, she is the third daughter of **Ba'al (Venus)** at Ugarit. She is equated with the goddess **Allatum (Venus)**.

AYA/A-A/AJA (Dawn) – An Akkadian Mother Goddess, consort of the **Sun God Shamash (Libran Sun, ruler Venus)**. She developed from the Sumerian Goddess **Sherida**, consort of **Utu (Libra)**. **Aya** is Akkadian for "dawn", & by the Akkadian period she was firmly associated with the Rising Sun & with Sexual **Love (Venus is the Sun of the Morning)** & youth. The Babylonians sometimes referred to her as **Kallatu** (the bride), & as such she was known as the wife of **Shamash (Libran Sun)**. She was worshiped as part of a separate-but-attached cult in **Shamash's** e-babbar temples in Larsa & Sippar.

By the Neo-Babylonian period at the latest (& possibly much earlier), **Shamash (Libran Sun)** & **Aya (Libra Ruler)** were associated with a practice known as Hasadu (Sacred Marriage). A room would be set aside with a bed, & on certain occasions the temple statues of **Shamash** & **Aya** would be brought together & laid on the bed to ceremonially renew their vows. This ceremony was also practiced by the cults of **Marduk (Mars)** with **Sarpanitum (Venus)**, **Nabu (Mercury)** with **Tashmetum (Venus)**, & **Anu (Heaven)** with **Antu**.

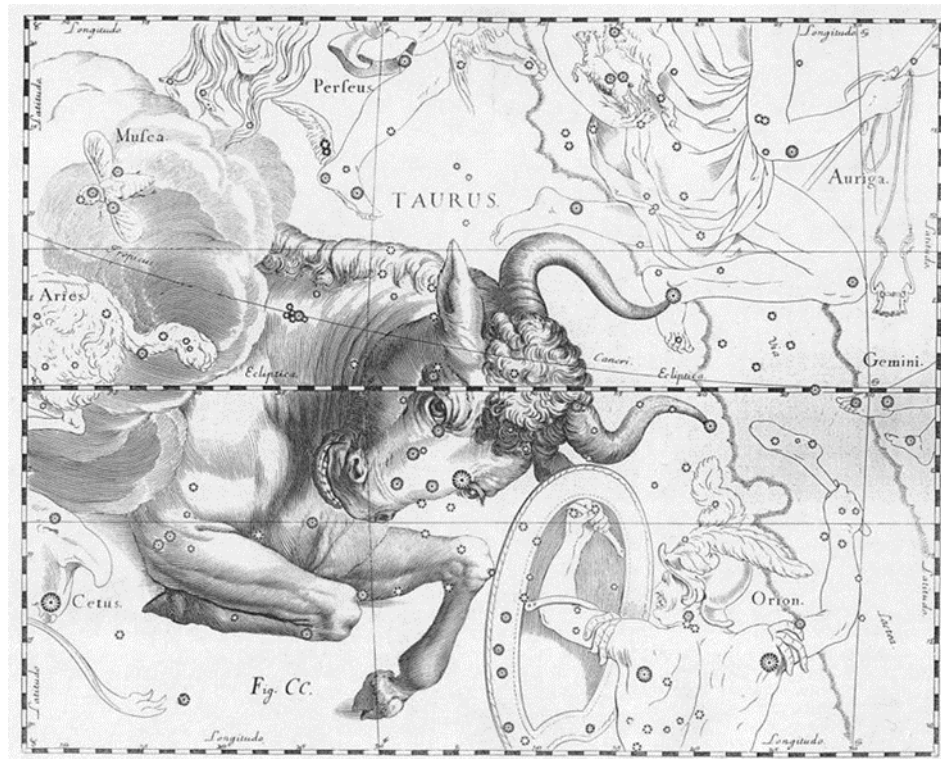
Sherida is one of the oldest Mesopotamian gods, attested in inscriptions from pre-Sargonic times, her name (as "**Aya**") was a popular personal name during the Ur III period (21st-20th Century BCE), making her among the oldest Semitic deities known in the region. As the Sumerian pantheon formalized, **Utu (Libra)** became the Primary **Sun God**, & **Sherida (Venus)** was syncretized into a subordinate role as an aspect of the **Sun** alongside other less powerful solar deities & took on the role of **Utu's** consort.

When the Semitic Akkadians moved into Mesopotamia, their pantheon became syncretized to the Sumerian. **Inanna (Venus)** to **Ishtar (Venus)**, **Nanna (Moon)** to **Sin (Moon)**, **Utu (Sun in Libra)** to **Shamash (Sun in Libra)**, etc. The minor Mesopotamian **Sun Goddess Aya (Venus)** became syncretized into **Sherida (Venus)**. The Goddess **Aya** had wide currency among Semitic peoples. She is mentioned in god-lists in Ugarit & shows up in personal names in the Bible (Gen 36:24, 2 Sam 3:7, 1 Chr 7:28).

BEL - The Babylonian god of sages. It is very important to understand that **Bel** & **Ba'al** as a name is **Venus (Bello/Beautiful)**, while **Bel/Ba'al** as a Title (Lord) is applied to multiple deities. Associated with **Marduk (Mars)**, sometimes depicted as his brother, **Bel (Venus, ruler of Taurus, the Bull)** was very clever & wise.

He was the son of **Enki (Ea) (Earth)**, the god of wisdom. Early translators of Akkadian believed that the ideogram for the god called in Sumerian **Enlil (Venus)** was to be read as **Bel (Venus)** in Akkadian.

BELIT-TSERI - The Babylonian Scribe of the Underworld. She kneels by the Throne of **Ereshkigal (Sirius)** (1 JAN, Zenith of **Sirius**) & records the names of the **dead** as they enter the dark realm. She was referred to as the 'Queen of the Desert'. Her consort was **Amurru (Mars)**, Amorite god of the sky & of nomads.



THE GREAT BULL OF HEAVEN (Sometimes attributed to **Gugalanna/Sirius**) - The **Bull of Heaven (Taurus)** was consort to the **Queen of the Underworld, Ereshkigal (Sirius)**, & was controlled by the Lord of the Sky, **Anu (Heaven)**. In the *Epic of Gilgamesh*, **Ishtar (Venus)**, spurned by **Gilgamesh**, demands that **Anu (Heaven)** release the **Bull of Heaven (Taurus)** to wreak havoc on **Gilgamesh's** kingdom in retribution. The **Bull of Heaven (Taurus)** is killed by **Gilgamesh (Saturn-Mercury) (Skull-Messenger)** & **Enkidu (Lord Earth/Present)** &, for this act, it is decreed that **Enkidu (Your Heart)** must **die**. In the poem *The Descent of Inanna (Venus)*, the sky goddess goes down into the **Underworld (Capricorn)** to pay her respects to her sister, **Ereshkigal (1 JAN, Zenith of Sirius)**, after the **Death** of her consort (**Taurus**).

BULL-MAN – A Sumerian Demon who works closely with Humans & Gods to hold the Forces of Chaos at Bay. He is depicted as a Man above the waist & a **Bull** below.



DAGON (Dagan) - The Babylonian God of Grain & Fertility (**Venus**) who was especially popular in the mid-Euphrates region of Mesopotamia where he also controlled the weather. His qualities were eventually assumed by **Adad (Mars)**.

ELLIL - The Babylonian name of **Enlil (Venus, Ruler of Taurus)**, God of the Wind & Storms, & the King of the Gods before he is replaced by **Marduk (Mars, ruler of Aries)**.

ENLIL - The Sumerian God of the **Air** whose name means 'Lord of the **Air** & Wind' but far more powerful than any mere elemental deity. His consort was **Ninlil (Venus)**. **Enlil (Venus)**, **Anu (Heaven)**, & **Enki (Earth)** made up a **triad** which ruled **Heaven, Earth**, & the **Underworld** or, alternately, the **Heavens**, Sky & Atmosphere, & **Earth**. **Enlil (Venus)** was an Important Weather God often prayed to & Worshipped in hopes of Fair Weather for a Good Harvest. Holder of the **Seven** Tablets of Destiny (Chakras), he was the Lord of the Sumerian pantheon after 2500 BCE & worshipped by the Akkadians (c. 2334 - 2083 BCE). He was later absorbed into the God **Marduk (Mars)** during the reign of Hammurabi (1792-1750 BCE). **Enlil** is featured in several myths as a supreme deity & king of the gods. Although his cult center was at Nippur, he was widely venerated throughout Mesopotamia.

EVE – The First Woman in the Hebrew Bible, Wife of **Adam (Mars)**, & Mother of Mankind. In the *Book of Genesis*, **Eve (Venus)** was created by God (**Yahweh**) by taking her from the rib of **Adam (Mars)**, to be **Adam's** companion. **Adam (Mars)** is charged with guarding & keeping the **Garden (Your Heart)** before her creation; she is not present when God commands **Adam (Mars)** not to eat the forbidden fruit – although she was aware of the command. She succumbs to the **Serpent's (Saturn's)** Temptation to Eat the Forbidden Fruit from the Tree of the Knowledge of Good & Evil (The Sumerian Huluppa Tree). She shares the fruit with **Adam (Mars)**, & as a result the first humans are expelled from the **Garden of Eden (Your Heart)**, thus the ensuing Fall of Man (Unconsciousness). Islamic teachings hold both equally responsible.

NINLIL (The Lady of the **Air**) - The Sumerian Goddess of **Air**, whose name was originally **Sud (Venus)** until she married **Enlil (Venus)**. In one version of the story, **Enlil (Venus)** seduces **Ninlil (Venus)** & is Banished to the **Underworld**. **Ninlil (Venus)** follows him there & gives birth to the Gods **Nanna (Moon)**, of the **Moon**; **Nergal (Orion)**, of War & **Death**; **Ninazu (Mercury)**, of the **Underworld**, Healing & Magic Incantations; & Enbilulu (Eridanus), of Rivers & Canals. These Gods then rise from the **Underworld** to **Earth** & Sky in keeping with the motif of the fertility myth of the Dying & Reviving God. The Babylonian Goddess of the same name is derived from this Sumerian deity, originally introduced by the Akkadians.

ISHTAR - The Babylonian version of the Sumerian Goddess **Inanna (Venus)** only More Sexualized. In the *Epic of Gilgamesh*, she tries to seduce King **Gilgamesh (Saturn-Mercury)**, is repulsed by him as he lists her many faults as a Fair-Weather **Lover**, & calls down the **Bull of Heaven (Taurus)**, ruled by **Venus** to punish the king.

ISHARA/ISHHARA/ISHKHARA (Queen of Judgement) - The Mesopotamian Goddess of the Oath (21-25 SEP, **Venus** at her Brightest, in **Libra**). She was associated with **Love (Venus)**, **War (Mars)**, & Divination (**Scorpio**, whose Claws Extended into the Scales of **Libra**) & also sometimes appears as a mother goddess or an **Underworld** Deity (**Pisces**). Mother of the **Seven** Sebettu (Chakras). She was "more closely connected with the Semitic tradition than the Sumerian & was assimilated into **Inanna (Venus)**. She was associated with the Semitic Grain God **Dagan (Venus Exalted in Pisces)**. Her symbol was the **Scorpion**.

KULITTA - Babylonian Music Goddess who served **Ishtar** with Beautiful Songs for **Tammuz (Mercury)**.

LAHAR - The Sumerian Goddess of **Cattle (Venus rules Taurus)**. She & her sister, **Anshar** (the Entire **Heaven**) were originally created to feed & adorn the **Anunaki** (Chakras).

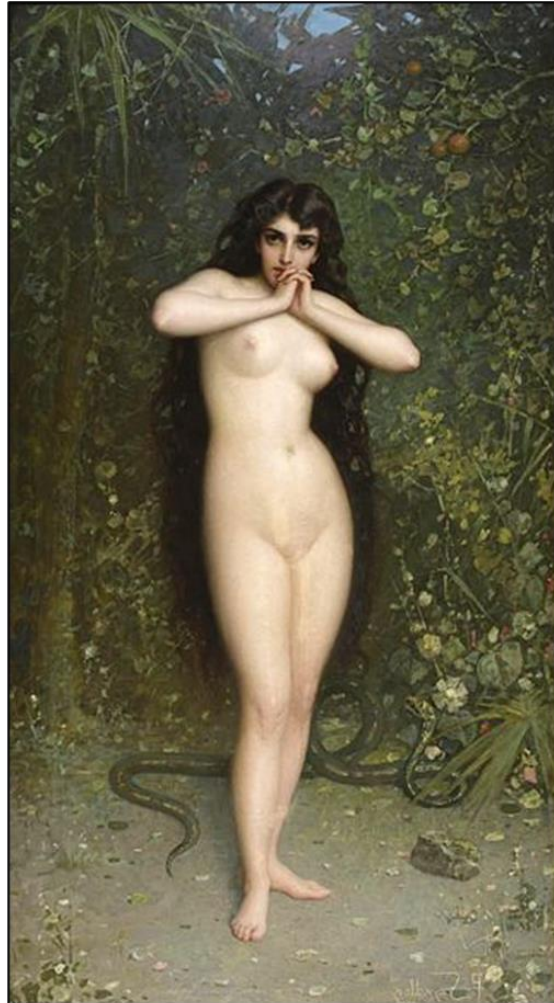
LAHMU & LAHAMU - Two early Babylonian Gods, the first born of **Absu (Your Semen)** (Eridanus) & **Tiamat (Draco)**, from whom all the other gods were born.

LAMA (Protective Spirit) - The Sumerian Goddess of Protection. She was known to the Akkadians as **Lamassu**. As **Lama** she was depicted as a woman in a long, tiered robe while, as **Lamassu**, she appeared as a **Winged Bull** or Lion with a woman's face or head & protected temples & palaces against the forces of chaos & their attendant evils. **Lama** appears often on cylinder seals & was widely petitioned for intercession with the gods.

LAMASSU - The famous Assyrian **Winged Bull-Man** who adorned palaces & temples to frighten off the forces of chaos. The **Lamassu** were protective spirits who were sometimes depicted as the **Bull-Man** (human above the waist & bull below) but, more often as a human-headed **bull** or lion with **wings**.



Lilith (1887), by John Collier



Eve (1889), by Pantaleon Szyndler

There are Two Sides to Every Coin, Yet Still Only One Coin~

LILI (**Lilû**, **Lilîtu**, & (w)ardat **Lilî** in Ancient Mesopotamian Religions of Sumer, Assyria, & Babylonia). **Lilî** & **Lilîtu** (Akkadian Meaning **Evening**) – She also Exists in Mesopotamian Cuneiform Inscriptions where **Lilî** & **Lilîtu** refers to Disease-Bearing Wind Spirits. In the Sumerian *Epic of **Gilgamesh***, she is known as ki-sikil-lil-la-ke (Translated as **Lilith**). In ***Gilgamesh**, **Enkidu**, & the **Netherworld***, a Huluppu Tree Grows in **Inanna's Garden** in Uruk, whose wood she plans to use to build a new throne. After Ten Years of Growth, she comes to Harvest it & finds a Serpent living at its base, a Zu Bird raising young in its crown, & that ki-sikil-lil-la-ke made a house in its trunk. **Gilgamesh** Killed the Snake, & the Zu Bird flew away to the Mountains with its young, while the ki-sikil-lil-la-ke fearfully destroys its house & runs for the forest.

LILITH – A Demoness (translated as **Night** Creatures, **Night** Monster, **Night** Hag, or Screech Owl). **Lilith** was Born in the **Garden of Eden** (**Your Heart**) & first mentioned in Biblical Hebrew in Isaiah 34:14, & in Late Antiquity Mandaean Gnosticism Mythology & Jewish Mythology Sources after 500 CE. She is mentioned in the Babylonian Talmud & in *The Book of **Adam** & **Eve*** as **Adam's** first wife, & in the Zohar Leviticus as "A Hot Fiery Female who First Cohabited with Man".

NANA - A Virgin Mother Goddess whose attributes were assumed by **Inanna (Venus)**.

NANAJA - A Sumerian Goddess of Sex & **War** whose attributes were assumed by **Inanna (Venus)**.

INANNA - (known to the Assyrians as **Ishtar**) - The Sumerian Goddess of Sexuality, Passion, Fertility, Love, Prostitutes & War. **Inanna (Venus)** became closely identified with the Babylonian Goddess **Ishtar (Venus)** who, in time, assumed many of her attributes. The most popular & beloved of all the Sumerian pantheon, **Inanna** features prominently in many of the best known & frequently copied stories, myths & hymns of Sumer (among them, *The Descent of Inanna*; **Inanna (Venus)** & *the God of Wisdom (Mercury)*; *The Courtship of Inanna (Venus)* & **Dumuzi (Mercury)**; & *The Huluppu Tree* (Chakras & **Pineal**) & is listed among the **seven** primary deities of Sumer early on along with **Anu (Heaven)**, **Enlil (Venus)**, **Enki (Earth)**, **Ninhursag (Sirius)**, **Nanna (Moon)**, & **Utu (Libran Sun)**.

Sargon of Akkad (Sargon the Great) invoked **Inanna (Venus)** for Protection & Victory in Battle & for Guidance in Politics & his daughter, Enheduanna, was the Chief Priestess of **Inanna** at Uruk & the composer of many hymns & songs to her. She is often depicted riding on a lion & referred to as 'The Queen of **Heaven**'. Her older sister was **Ereshkigal (Sirius)**. She was the Foremost Goddess & Patron of the City of Uruk to whom she was said to have given the sacred 'me' (Laws) which were given her in a drunken revel by the God of Wisdom, **Enki (Lord Earth)**. Many of the compositions concerning her depict her as Highly Sexual, Unmarried, & able to "turn men into women" with Passion. She was associated with the Planet **Venus**. In the *Myth of Etana (Venus)* she is referenced as **Innina (Venus)** & early on, was considered the twin sister of **Utu (Shamash)** the **Libran Sun** God. This astronomical phenomenon led **Venus** to often be considered a "second **Sun**."

NANSHE (Nanse) -The Sumerian Goddess of Social Justice (**Venus**, ruler of **Libra**) who looked after orphans & widows. She also oversaw Fairness, Fresh Water, Birds & Fish, Fertility & Favored Prophets, giving them the ability to Interpret Dreams. She was also known as the Lady of the Storerooms & in this capacity oversaw that Weights & Measures were correct (**Libra**). Her consort was Haia, God of Storerooms. She was adept at Interpreting Dreams & in one famous myth, the Pious King Gudea consults her regarding a dream about the proper time to Build a Temple.

SAKKAN - The Sumerian God of **Cattle** charged with Protecting both Domesticated & Wild Animals. He was responsible for the Fertility of Animals in the Wild & was often depicted as a **Shepherd**. In Akkadian he was known as **Sumuqan**. In both *The Epic of Gilgamesh* & the Sumerian Poem, *The Death of Gilgamesh*, **Sakkan/Sumuqan** is mentioned in connection to the **Underworld**.

SUMUQAN - The Akkadian & Babylonian version of **Sakkan**.

SUMUGAN - The Sumerian god of the open plains. Also known as **Shumugan**, he was responsible not only for the plains but the animals who grazed upon them.

SHAMAT - The Prostitute who helped **Gilgamesh (Mercury)** tame the Wild Man **Enkidu (Earth/Present)**.

SHERIDA - (Serida) -The Ancient Sumerian Mother Goddess, Giver & Sustainer of **Light & Life**. One of the oldest gods in Mesopotamia, she was once a primary deity who, in time, assumed a subordinate role as consort to the **Sun** God, **Utu (Libra Sun, Venus Ruler)**. She was known, in this capacity, to the Akkadians & Babylonians as **Aja** (or **Aya**) the Goddess of Dawn (**Venus**, the **Sun** of the Morning).

SHULPAE - The Mesopotamian God of Feasts & Good Times. She is sometimes represented as consort of **Ninhursag (Sirius)**.

SARRUMA (**Šarruma**, **Sharruma**) - A Hurrian Mountain God, who was also worshipped by the Hittites & Luwians. **Šarruma (Venus)** is a Son of the Weather-God **Teshub (Venus)** & the Goddess **Ḫepat** & brother of the goddess **Inara (Venus)**. He is often depicted riding a Tiger or Panther & Carrying an Axe (labrys). His wife is the daughter of the Dragon Illuyanka. He is depicted behind his father on the Illuyanka's relief found in Malatya (c. 1050-850 BCE).

Šarruma (Venus) was originally a **Bull**-Shaped Mountain God of the Anatolian borderlands. Early research suggested that **Šarruma (Venus)** was originally the partner of the Goddess **Ḫepat** & had subsequently been replaced by **Teššup (Venus)** & demoted to be the goddess' son. Newer research indicates that **Ḫepat** was always the partner of the Weather God of Aleppo (**Venus**) & that early depictions of **Ḫepat** & **Šarruma (Venus)** as a pair understood them as mother & son.

SCORPION PEOPLE - In Sumerian & Babylonian stories, the Scorpion People were powerful servants of the **Sun** God **Utu (Shamash)**. They had a human head, arms & torso but were bird-like below the waist (sometimes with human legs, sometimes bird) & a Scorpion's Tail (**Scorpio**'s Claws Extended into the Scales of **Libra**). The people of Mesopotamia invoked the Scorpion People as figures of powerful protection against evil & the forces of chaos. In the Epic of **Gilgamesh**, the Scorpion Couple (Scorpion Man & Scorpion Woman) (**Mars** & **Venus**) Guard the Great Gate of the Mountain where the **Sun** Rises (The Winter Solstice – Christmas) & are described as 'terrifying'.

TASHMIT/TASHMETU/TASHMETUM - An Akkadian Goddess, the consort of the God **Nabu (Mercury)**. She is called upon to Listen to Prayers & to Grant Requests. **Tashmetum (Venus)** & **Nabu (Mercury)** both shared a temple in the city of Borsippa, in which they were patron deities. **Tashmetum**'s name means "The Lady Who Listens". She was known by the epithets "Lady of Hearing" & "Lady of Favor."

TESHUB (**Teshup**, **Tešup**) - The Hurrian God of Sky & Storm. He is depicted holding a **Triple** Thunderbolt (**Pineal** Activation!) & a weapon, usually a Double-Headed Axe/Labrys or Mace. The Sacred **Bull (Taurus)** common throughout Anatolia was his signature animal, represented by his Horned Crown or by his steeds **Seri** & **Hurri**, who drew his Chariot or carried him on their backs.

The Hurrian myth of **Teshub**'s Origin—he was conceived when the God **Kumarbi** bit off & swallowed his Father **Anu**'s (**Heaven**'s) Genitals, similarly to the Greek story of **Uranus (Heaven)**, **Cronus (Saturn)**, & **Zeus (Jupiter)**, which is recounted in Hesiod's Theogony. **Teshub**'s brothers are **Aranzah** (The Tigris River), **Ullikummi** (Stone Giant) & **Tashmishu**.

In the Hurrian schema, **Teshub** was paired with **Ḫepat** the Mother Goddess; in the Hittite, with the **Sun** Goddess **Arinniti** of **Arinna** (a Cultus of Great Antiquity which has similarities with the Venerated **Bulls** & **Mothers** at **Çatalhöyük** in the Neolithic Era). His son was called **Sarruma (Venus)**, the Mountain God.

TARU (Taurus) was the name of a similar Hattic Storm God as **Teshub**, whose mythology & worship as a primary deity continued & evolved through descendant Luwian & Hittite cultures. In these two, **Taru (Taurus)** was known as **Tarhun**, **Tarhunt**, **Tarhuwant**, & **Tarhunta**, names derived from the Anatolian root "To Defeat, Conquer." **Taru/Tarhun/Tarhunt** was ultimately assimilated into & identified with the Hurrian **Teshub** around the time of the religious reforms of **Muwatalli II**, Ruler of the Hittite New Kingdom (Early 13th Century BCE). Among these reforms were the Official Incorporation of Hurrian deities into the Hittite

Pantheon, with a smaller number of important Hurrian Gods being explicitly identified with preexisting major Hittite deities (like **Taru**). **Teshub** reappears in the post-Hurrian cultural successor kingdom of Urartu as **Tesheba**, one of their chief gods; in Urartian art he is depicted standing on a **Bull (Taurus)**.



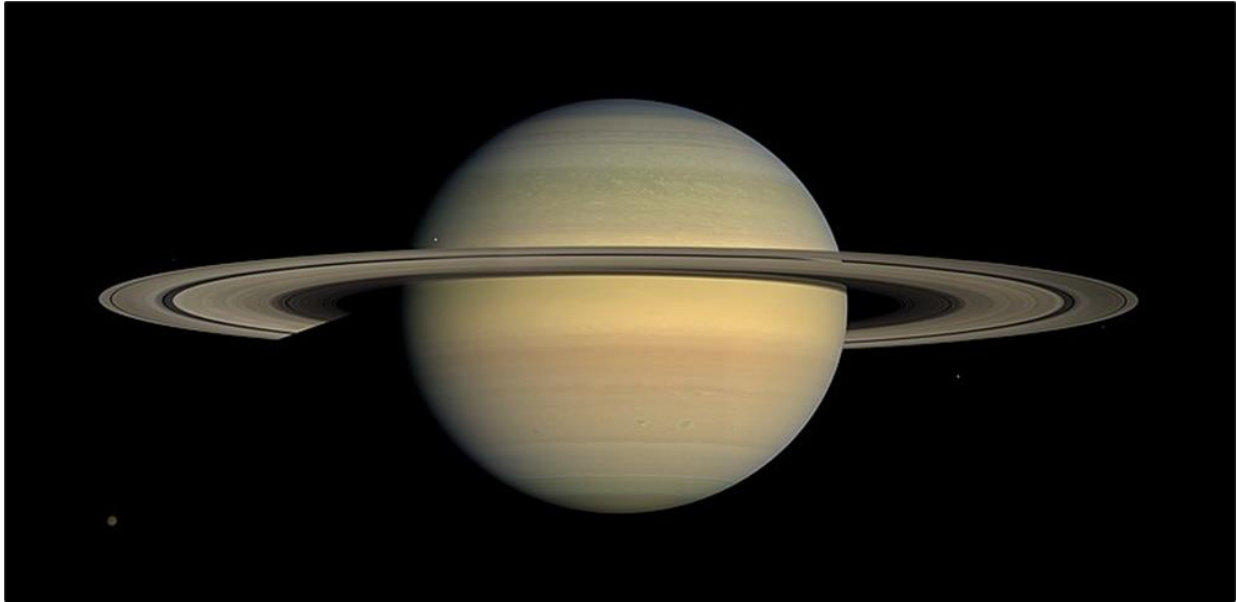
YAHWEH (YHWH, YHVH, JEHOVAH) - The National God of the Kingdoms of Israel (Samaria) & Judah. In the Oldest Biblical Literature, he is a Storm & Warrior God who leads the Heavenly Army against the Enemies of Israel. The Israelites worshipped him alongside a variety of Canaanite Gods & Goddesses, including **El (Venus)**, **Asherah (Sirius)**, & **Baal (Venus)**. In later centuries, **El (Venus)** & **Yahweh (Venus)** were conflated & **El**-linked epithets such as El Shaddai came to be applied to **Yahweh** alone, while other versions of **Venus** as **Baal** & **Asherah** were absorbed into the **Yahwistic** Religion. The Most Complete View of **YHWH** is Contained within the Triplicate Aspect of the Age of **Taurus** (Fixed **Earth**) (the **Tetragrammaton**), Ruled by **Venus** ("...for I the Lord Your God Am a Jealous God"...), Exalted by the **Moon** (Egyptian **Moon** God **Yah(w)**). It is the **Moon** [3] & **Earth** [4] that **Circle** [3] the **Square** [4].

ZARPANIT (Sarpanit, Sarpanitu, Zarpanit, Zarpandit, Zerpanitum, Zerbanitu, Zirbanit) – An Early Sumerian & Babylonian Goddess of Fertility (**Venus**), charged with the Fertility of the Whole Universe. Also known as **Beltia (Venus)**, her attributes were later assumed by **Inanna (Venus)** & then **Ishtar (Venus)**. She was sometimes the consort of **Marduk (Mars)**. Her name means "The Shining One," & she is associated with the Planet **Venus**. By a play on words her name was interpreted as **zēr-bānītu**, or "Creatress of Seed", & is thereby associated with the Goddess **Aruru (Venus)**, who, according to Babylonian myth, created mankind.

Zarpanit's (Venus') Marriage with **Marduk (Mars)** was Celebrated Annually at New Year in Babylon (21 MAR, Vernal Equinox, Heliacal Rise of **Venus**, in **Aries**, ruled by **Mars**). She was worshipped via the Rising **Moon** & was often depicted as being Pregnant. She is also known as **Erua**, **Gamsu**, **Ishtar**, &/or **Bêlit**.

ZAPPU - "The Star Cluster (Star of Stars)" or "The Bristle" (the **Pleiades**).

ZALTU - The Babylonian Goddess of Strife associated with **Ishtar (Venus)** & the Personified the Destructive Side of the Goddess.



SATURN

[Astrological]: **Saturn** is the Ruler of **Capricorn (Underworld)** (**Cardinal Earth**). The Acronical (**Night**) Rising of **Orion** Occurs on 21 DEC (**Capricorn**, Winter Solstice). In Ancient Astrology, **Saturn** also Ruled **Aquarius** (21 JAN – 21 FEB). The Zenith of **Orion** Occurs on 19 FEB (**Aquarius**) (where the Boundary Stones are Laid). 864 **Saturnian** Years = One Great Procession (25,920 **Earth** Years). **Saturn** is the best **Time** Keeper (**Chronometer**) of the Grand Sky Parade. **Saturn** is **Cronos**. **Saturn** Rules the **Satya** Yuga (Golden Age). **Saturn** is Exalted in **Libra** (21 SEP – 21 OCT) (**Cardinal Air**, Ruled by **Venus**), Falls in **Aries**, & is in Detriment in **Cancer**. **Saturn** is Associated with Law, **Death**, Justice, Agriculture. **Saturn** Motto: I Build. The Relationships of **Saturn**, **Orion** (The Hunter) & **Venus** are Replete within Mesopotamian Myths.

ETANA - The Hero of the Sumerian *Epic of Etana* which tells the story of King **Etana**, one of the early antediluvian rulers, who, despairing of having a son because his wife is barren, ascends to the **Heavens** on the back of the Great Eagle (Aquila) he aided to present his case before the gods. He is given the plant of birth, which he & his wife must eat together, & is rewarded with a son, Balih.

ENTEN - Sumerian fertility deity. He was said to have been created by **Enlil (Venus)** as a Guardian of Farmers, along with the Vegetation God **Emesh (Saturn)**. **Enten** was given specific responsibility for the Fertility of Ewes, Goats (**Saturn**), Cows, Donkeys, Birds, & other animals. He is identified with the Abundance of the Earth & with the Winter Period (**Capricorn**).

NIN-ILDU - The Babylonian God of Carpentry & Patron of Carpenters.

ENMESARRA (Enmesarra, Enmešarra). In Sumerian & Akkadian Mythology is an **Underworld** God of the Law. Described as a **Sun** God (The **Sun** is born in **Capricorn**, ruled by **Saturn**), protector of flocks & vegetation, & therefore he has been equated with **Nergal** (21 DEC, Evening Rise of **Orion**, in **Capricorn**, ruled by **Saturn**). He is also described as an ancestor of **Enlil (Venus)** & it has been claimed that **Enlil (Venus)** slew him. Brother of **Enten (Capricorn)**.

EMESH - Sumerian God of **Vegetation**. He was created, alongside the god **Enten (Capricorn)**, at the wish of **Enlil (Venus)** to take responsibility on **Earth** for Woods, **Fields**, **Sheep** Folds, & Stables. He is identified with the abundance of the **Earth** & with Summer.

MISHARU - The Sumerian God of Law & Justice, brother of **Kittu (Libra, Saturn Exalted)**.

KITTU - The Sumerian God of Justice, brother of **Misharu (Saturn)**. In some sources **Misharu** is the God of Law & Kittu the God of Justice which proceeds from the Law, in others they appear equal as both being Gods of Law & Justice.

SHUTU - The Sumerian God of Sickness. Personification of the South Wind.

GIBIL (Governor of the Gods) - The Assyrian God who presided as Judge over Gods & Men. He was associated with Judges & took a keen interest in punishing those who had been unjust judges in life. Also, the name of a fire god.



ORION

(Evening Rise in **Capricorn**)

GUGALANNA (Ennugi) (King of **Heaven**) (Canal Inspector of **An**) - First husband of **Ereshkigal (Sirius)** (Queen of the Underworld). As **Ennugi**, he is the son of **Ereshkigal (Sirius)** & **Gugalanna (Orion)** is **Ninazu (Mercury)**. In **Inanna's (Venus)** *Descent into the Underworld*, **Inanna (Venus)**, the Goddess of **Love**, Beauty, Sex, & **War**, tells the Gatekeeper **Neti (Mercury)** that she is descending to the **Underworld** to attend the funeral of "**Gugalanna (Orion)**, the husband of my elder sister **Ereshkigal (Sirius)**."

LUGALBANDA - The Third King of the city of Uruk, Husband of the Goddess **Ninsun (Sirius)** & the Father of **Gilgamesh (Saturn-Mercury)**. He is featured as a Legendary Hero in some stories. **Gilga** = **Golgotha** (Place of the **Skull**) & **Mesh** = **Messenger (Mercury the Meshiach/Messiah)**.

ERRAGAL - A Sumerian God of the **Underworld** (21 DEC, Evening Rise (birth) of **Orion, Saturn, Capricorn**).

ERRA - The Babylonian God of **War, Destruction, Death** & Strife (21 DEC, Evening Rise (birth) of **Orion, Saturn, Capricorn**). Also known as Nergal. Best known from the work *The Wrath of Erra* in which he destroys Babylon for no reason after tricking **Marduk** into leaving the city.

IRRA (a.k.a. Erra) - Babylonian God of **Plagues, Pestilence, Death, War, & Destruction**, associated with **Nergal** (God of **Death**). **Irta** was a Clever & Annoying Demon responsible for all kinds of Human Miseries. In *The Epic of Irta* (a.k.a. *The Wrath of Erra*) he takes over the city of Babylon in **Marduk's (Mars)** absence, leading to its **destruction** or, alternately, delivers Babylon from her enemies but only after 'turning the world upside down' (**Saturn**) with the slaughter of the righteous & unrighteous alike. *The Epic of Irta* text was enormously popular in Babylon. More copies of this work have been discovered than copies of the more famous Epic of **Gilgamesh (Saturn-Mercury)**.

GARRA (Gerra) - The Babylonian God of **Fire**, especially noted for cleansing or Purifying **Fire**.

NERGAL (a.k.a. **Erra/Irra**) – Sumerian God of **War, Pestilence, Destruction, Death, & the Underworld**. Co-ruler with **Ereshkigal (Sirius)** but originally associated with **Shamash (Sun in Libra, Saturn Exalted)**. His cult center was at Kutha where he was first known as **Meslamtaea** (an Agricultural God associated with the Heat of the **Sun** in its Negative Aspects (4 JUL, Heliacal Rise of **Orion**; the “Dog Days” of Summer). The intensity of the Summer **Sun** (or **Sun** at Midday) was thought to be caused by **Meslamtaea's** fury & shifted from a regional god to a universal god associated with the negative aspects of life. Nergal is best known for insulting Namtar, **Ereshkigal's** representative at the feast of the gods, & having to make amends to her, resulting in their love affair & his eventual move to the **Underworld** to live with her (21 DEC, Evening Rise of **Orion**; 1 JAN, Zenith of **Sirius**). In some myths he is credited with creating human beings & in incantations is invoked for protection because of his great strength. As **Erra (Orion)** he is famous from the work *The Wrath of Erra* in which he destroys Babylon for no reason.

He worshipped throughout Mesopotamia (Akkad, Assyria, & Babylonia) with the main seat of his worship at Cuthah represented by the mound of Tell-**Ibrahim** (The City of **Abraham**). **Nergal** is mentioned in the Hebrew Bible as the deity of the city of Cuth (Cuthah): "& the men of Babylon made Succoth-benoth, & the men of Cuth made **Nergal**" (2 Kings, 17:30). According to the Talmudists, his emblem was a Cockerel, & **Nergal** means a "Dunghill Cock," although standard iconography pictured **Nergal** as a **Lion (Orion in Leo, Ruled by the Sun)**; a **son** of **Enlil (Venus)** & **Ninlil (Venus)**, along with **Nanna (Moon)** & **Ninurta (Orion)**.

Portrayed in hymns & myths as a God of **War & Pestilence**, **Nergal (Orion)** represents the **Sun** of Noontime & of the **Summer Solstice** that brings **destruction** (High **Summer** being the **Dead** Season in the Mesopotamian Annual Cycle). He was also called "The King of Sunset" (**Saturn Exalted, Libra**). Over time **Nergal (Orion)** developed from a **War God** (21 JUN, **Summer Solstice**) to a God of the **Underworld** (21 DEC, Evening Rise of **Orion** & 19 FEB, Zenith of **Orion**). In the mythology, this occurred when **Enlil (Venus)** & **Ninlil (Venus)** gave him the **Underworld**.

Nergal was also the deity who presides over the **Netherworld**, & who stands at the head of the special pantheon assigned to the Government of the **Dead** (gathered in a large subterranean cave known as Aralu

or Irkalla). In this capacity he has associated with him a goddess **Allatu (Venus)** or **Ereshkigal (Sirius)**, though at one time **Allatu (Venus)** may have functioned as the sole mistress of Aralu, ruling in her own person. In some texts the god **Ninazu (Mercury)** is the son of **Nergal (Orion)** & **Allatu/Ereshkigal**.

Ordinarily, **Nergal (Orion)** pairs with his consort Laz. Standard iconography pictured **Nergal** as a **Lion (Orion in Leo, ruled by the Sun)**, & Boundary-Stone (19 FEB, Zenith of **Orion**) Monuments Symbolize him with a mace surmounted by the Head of a **Lion (Leo)**.

NINURTA - Identified with Ningirsu, Pabilsag, & the biblical Nimrod (**Orion**) is the Sumerian & Akkadian Hero-God of **War** (21 MAR, **Orion** on the Vernal Equinox, **Mars** ruling the **First Decan**), [Bow] Hunting [the Zodiac], & the South Wind (21 DEC, Evening Rise of **Orion**). He first appears in texts in the early 3rd millennium BCE (Age of **Taurus**) as an Agricultural God (Vernal Equinox = Spring) & local deity of the town of Girsu (as **Ningirsu**) & the city of Larak (as Pabilsag (Sagittarius)), both Sumerian communities. His role as a God of Agriculture changed as the cities of Mesopotamia increasingly militarized & began campaigns of conquest, one city against another.

Ninurta (Orion/Capricorn) was the son of **Enlil (Venus)** & **Ninhursag (Sirius)**, but in some stories, **Enlil (Venus)** & **Ninlil (Venus)**. His wife was **Gula (Sirius)**, the Goddess of Healing (though in earlier inscriptions, as **Ningirsu (Orion/Capricorn)**, he was married to the goddess **Bau/Baba (Sirius)**). Although he was chiefly defined by his Aggressive Nature, he was also associated with Healing & Protection (hence his association with **Gula**) & was frequently invoked in Magical Spells to ward off **Danger, Demons, & Disease**. He is most often represented as a **Warrior**, sometimes with upraised wings, holding a Bow & Arrow (**Orion**) & carrying his famous Mace Sharur (a Weapon Capable of Speech & Reason). In Babylonian Art, he stands or runs on the back of a Scorpion-tailed **Lion-beast**. Still, as late as c. 1500 BCE, he was still associated with Agriculture, Growth, & the Harvest, depicted as a fully-realized individual (a Self-Realized MAN) capable of great deeds but also as flawed as any mortal (because He is a Mortal!).

The Assyrian & Neo-Assyrian Empires Embraced **Ninurta (Orion/Capricorn)** as the son of their God **Assur (Heaven)**, & under the Reign of **Ashurnasirpal II** (884-859 BCE) a Great Temple & Ziggurat were built to the God in **Ashurnasirpal II's** new city of Kalhu. Seals from this time represent **Assur (Heaven)** as the Winged Disc, with **Ninurta's** name beneath, clearly suggesting the two were regarded as almost equals. **Ninurta (Orion)** was invoked by numerous kingdoms & principalities in ancient Mesopotamia, whether for protection or aid in military matters, from c. 3300 - 612 BCE, when the Neo-Assyrian Empire fell to invaders. Early in his career, however, he was envisioned as the polar opposite of a **war** god.

Ninurta originated as **Ningirsu** (Lord of Girsu) in Sumer, & the earliest texts use this name for the son of **Enlil (Venus)** & **Ninlil (Venus)** (although one myth suggests he is the son of **Enlil (Venus)** & a She-Goat (**Capricorn**)). Gudea of Lagash (c. 2144-2124 BCE), noted for his piety & devotion to the gods, dedicated himself to **Ningirsu (Orion/Capricorn)**, & his successor, **Ur-Ningursu**, would take the god's name to honor him. Gudea is probably best known for the Gudea Cylinders, two terracotta cylinders (dated to c. 2125 BCE) which record his dream in the text known as The Building of **Ningirsu's** Temple, the longest text in Sumerian yet discovered.

Ningirsu (Orion/Capricorn) was already recognized as a War God by the 2nd millennium BCE where he is featured in the Babylonian work The Epic of **Anzu (Eridanus)**. This myth would be revised during the 1st millennium BCE with **Ningirsu's** name changed to **Ninurta**. The god was already known by this later name by c. 2600 BCE, & even though **Ningirsu** would continue to be referenced in Sumer, **Ninurta** would be the

name most Mesopotamians knew & used. Even though he was considered a Great Warrior-God, Champion of the Gods, & Protector of Humanity, **Ninurta** continued to be associated with Agriculture.

Ninurta's Power & Position in the Mesopotamian Pantheon would have lent significant weight to any document attributed to him, & especially so considering he would have had to take time out from heroic feats to offer his suggestions. The myths concerning **Ninurta** share many characteristics with those of the Babylonian God **Marduk (Mars)** (Exalted in **Capricorn**) & the later Greek Hero Heracles (Roman Hercules) in that he triumphs over the forces of chaos & establishes order (like **Marduk**), but his pride, like Hercules, can sometimes get the better of him (the Ancient Story of the Hero (the **Sun/Orion** in his Age) making a Triumphant Lap around the **Zodiac**).

In The Epic of **Anzu** (also known as *The Defeat of Zu*), the **Anzu** bird (The Phoenix in the middle of the **Eridanus**) has Stolen the Tablets of Destiny (**Pineal/Mercury**) from **Enlil (Venus)**. The Tablets hold the Fate of Gods & Mortals &, Equally Important, Legitimize the Rule of Whomsoever Holds them. The **Anzu** Bird (a Divine Creature of Enormous Size) waited for his chance to steal the tablets & one day, as **Enlil (Venus)**, ruler of **Libra**) is washing his face (the Flood), the bird swoops in & snatches them.

He (Phoenix) flies away while **Enlil (Venus)** asks for help from the other gods. Only **Ninurta (Orion/Capricorn)** comes forward & pursues the **Anzu**. The Tablet of Destinies, however, have the power to turn back time (BECAUSE YOU RE-MEMBER WHO YOU ARE!), & when **Ninurta (Orion/Capricorn)** fires his Arrows (**Orion's** Bow) at the Bird (Phoenix), they fall apart mid-air & revert to their components: the shafts return to the canebrake, the feathers to birds, the tip to the quarry. Even **Ninurta's** Bow goes back to the woods & the bowstring to a **sheep**. **Ninurta (Orion/Capricorn)** is driven back by the **Anzu** (Phoenix) but calls upon the South Wind (**Saturn** rules the South Wind), which tears the bird's wings off, dropping him to the ground. **Ninurta (Orion/Capricorn)** then slits the **Anzu's** throat & brings the Tablets of Destiny back to **Enlil (Venus)**.

In the poem **Lugale** (also known as *The Exploits of Ninurta*), the Hero must face the Demon of Sickness & Disease known as Asag (also Agag) who lived in the **Underworld**. This conflict is not initiated by Asag, however, but by **Ninurta's** mace, Sharur, who encourages him to go battle the demon by praising **Ninurta's** strength, courage, & skill, & telling him how easy it will be to defeat the creature. **Ninurta** goes to meet Asag in battle, but the demon is not alone; he has assembled an army of rock monsters & rebellious plants who march toward the hero. **Ninurta** is afraid (he "flees like a bird"), but Sharur tells him to turn around & face his enemies, encouraging him with reminders of past glories & the great fame he will win in victory. **Ninurta (Orion/Capricorn)** destroys Asag & his army with his Mace, Great Bow, & the other weapons he has in his Belt.

Asag & his followers, however, kept the Primeval Waters of the **Underworld** in check, & with their deaths, the brackish waters rise to flood the land. Nothing can grow because no fresh water can feed the crops. **Ninurta** took hold of the corpses of his enemies & piled them up to form a wall around the land & then piled them higher into a mountain to keep the waters of the **Underworld** in place & then raised the River Tigris to water the land.

Ninurta's mother, **Ninmah** (Magnificent Queen) (**Sirius**), comes from **Heaven** to rejoice at her son's victory & he dedicates the Mountain of Stone to her honor, renaming her **Ninhursag** (Lady of the Mountain) (**Pineal** Activation!). The goddess **Nisaba (Mercury)** appears to record **Ninurta's** triumph & **Ninhursag's** new name, & the poem ends with praise for the art of writing which preserves such moments eternally.

In the story of the Slain Heroes, **Ninurta (Orion/Capricorn)** must defeat an assortment of strange creatures including the Six-Headed Wild **Ram (Aries)**, the Palm-Tree King (**Mercury**), the Strong Copper (**Venus**), & the **Seven-Headed Snake** (Chakras). Some of these monsters are inanimate objects, like the Magillum Boat (Argo) which brought the **Souls** of the **Dead** to the **Underworld**, & others symbolize valuable material like Strong Copper. This myth with its theme of successive trials & victories is thought to have contributed to the Greek story of the Labors of Heracles (**Orion**).

Like Heracles, **Ninurta** is not always seen as the Heroic Champion, however, & in the story **Ninurta (Orion/Capricorn)** & the **Turtle (Earth)**, his pride overtakes his reason. The tablet is broken toward the end, & part of the introduction is missing, but the story seems to be set after **Ninurta (Orion/Capricorn)** has defeated the **Anzu** (Phoenix) & Asag & is being honored by **Enki (Earth)**. **Ninurta (Orion/Capricorn)** has brought a chick from the **Anzu** Bird (a Reborn Phoenix) to the Absu (Primeval Watery Depths) (Abyss) of **Enki's** home at **Eridu (Eridanus)**. **Enki (Earth)** praises **Ninurta (Orion/Capricorn)** for his victories, for bringing the offspring of his enemy to **Eridu (Eridanus)**, for returning the Tablets of Destiny (**Pineal Activation!**); but **Ninurta (Orion/Capricorn)** is angered by the accolades. He wants to achieve even greater victories & "set his sights on the whole world." **Enki (Earth)** reads his thoughts & fashions a Giant **Turtle (Earth)** which he releases behind the hero. The Turtle bites & holds **Ninurta's Ankle (Orion/Aquarius)**, & as they struggle, the **Turtle (Earth)** digs an enormous pit with its claws which the two falls into (The **Eridanus Supervoid**).

Enki (Lord **Earth**) then looks down into the pit, where the **Turtle (Earth)** is chewing on **Ninurta's Feet (Pisces)**, & mocks him saying, "You who made great claims - how will you get out now?" The conclusion is lost, but the **Turtle (Earth)** & the pit were intended to humble the hero & force him to recognize his limitations & also accept with gratitude the praise for his achievements instead of desiring greater glory, & it is assumed that **Enki's (Earth's)** scheme succeeded (Humble **Your Heart**).

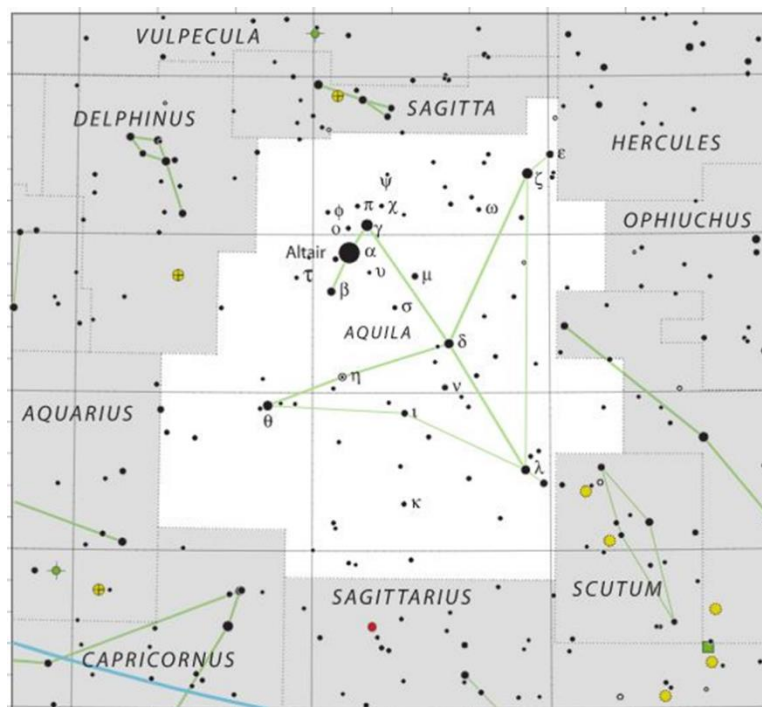
Even so, the glory he sought in the tale of the **Turtle (Earth)** was freely given by the great kings of the Assyrian Empire. **Tukulti-Ninurta I** (c. 1244-1208 BCE) honored the god by taking his name & invoking him in battle, crediting **Ninurta** with his spectacular military victories & successful reign. Tigleth Pileser I (c. 1115-1076 BCE) honored the god, as did Adad Nirari II (c. 912-891 BCE) & many others. No Assyrian king outdid **Ashurnasirpal II**, however, who built the city of Kalhu as the capital of the Neo-Assyrian Empire with the great Temple of **Ninurta** as his first project, decorating the walls with reliefs honoring the god's triumphs. One of the most famous Mesopotamian reliefs, often used on book covers or magazines dealing with the Near East, is of **Ninurta** & the **Anzu** Bird (Phoenix) from the Temple at Kalhu. This Temple not only served as a place of worship for the god but ministered to the poor, orphans, the homeless, & found work for itinerant laborers. The city's great temple & nearby towering ziggurat dedicated to **Ninurta** were known far beyond the boundaries of Mesopotamia.

The fame of the hero-god **Ninurta (Orion/Capricorn)** as well as his city, is attested to in the Bible where **Ninurta** is known as **Nimrod (Orion/Capricorn)**, who is described as "A Mighty Hunter" & Kalhu is given as Calah, "A Great City" (Genesis 10:8-12). **Nimrod (Nimrud)**, would attach itself to the city of Kalhu in the 19th & 20th centuries CE when archaeologists took it for the city of **Nimrod (Orion)** of the Bible. Some scholars have suggested that the biblical **Nimrod** is **Tukulti-Ninurta I**, but this claim is untenable. **Tukulti-Ninurta I** had nothing to do with Kalhu whereas **Ashurnasirpal II** dedicated the entire city to **Ninurta**, & it would be this association remembered by the later Hebrew scribes who wrote the Genesis narrative.

Sargon II (722-705 BCE) built his city of Dur-Sharrukin (Fortress of Sargon) between 717-706 BCE & moved the capital there, but Kalhu continued to be highly respected; the queens of the empire were buried at

Kalhu & the kings at the traditional site of the city of **Ashur (Heaven)**. During this period, **Ninurta (Orion/Capricorn)** lost prestige because Sargon II favored the God of Writing, **Nabu (Mercury)**, who was also considered a son of the High God **Assur (Heaven)**. Sargon II's successors, however, again elevated **Ninurta (Orion/Capricorn)**, & he is mentioned frequently during the reigns of Esarhaddon (681-669 BCE) & **Ashurbanipal (668-627 BCE)**.

ZABABA/ZAMAMA - Sumerian **War** God who was the tutelary deity of the city of Kish in Ancient Mesopotamia. He is connected with the god **Ninurta** (21 DEC, Evening Rise of **Orion, Capricorn**, ruled by **Saturn**). The symbol of **Zababa** is an Eagle-Headed Staff (Aquila, above **Capricorn**) which was often depicted next to **Ninurta's** symbol. **Inanna (Venus)** & **Baba (Sirius)** are variously described as his wife. His sanctuary was the E-meteursag. Several ancient Mesopotamian kings were named in honor of **Zababa**, including **Ur-Zababa** of Kish (early patron of Sargon of Akkad, c. 2300 BCE) & **Zababa-shuma-iddin** (a 12th-century BCE Kassite king of **Babylon**). The Hittites applied the name **Zababa** to various War Gods, using their Akkadian writing conventions. Among these gods were the Hattian Wurunkatte; the Hittite & Luwian Hašamili, Iyarri, & **Zappana**; & Hurrian Aštabi, Hešui, & Nubadig.



ISHUM – Ishum (Orion/Saturn) is a minor god in Akkadian mythology, the brother of **Shamash (Sun in Libra, Saturn Exalted)** & an attendant of **Erra (Orion/Saturn)**. He may have been a God of **Fire** & according to texts, led the Gods in War as a herald but was nonetheless generally regarded as benevolent. **Ishum** is known particularly from the **Babylonian Legend of Erra & Ishum**. He developed from the Sumerian figure of **Endursaga**.

ENDURSAGA - Endursaga (Orion/Saturn) is the herald god in the Sumerian mythology. He leads the pantheon, particularly in times of conflict. In Akkadian times he becomes **Ishum (Orion/Saturn)**.

HENDURSAGA - Hendursaga (Orion/Saturn) is the Sumerian, Babylonian, & Akkadian God of Law (**Saturn**). He was titled by Gudea of Lagash "Herald of the Land of Sumer."

ENDUKUGGA & NINDUKUGGA - Parental Gods living in the **Underworld** (**Capricorn** & **Aquarius**, ruled by **Saturn**). **Endukugga** (21 DEC, Evening Birth of **Orion** (**Capricorn**, ruled by **Saturn**); 19 FEB, Zenith of **Orion** (**Aquarius**, ruled by **Saturn**) & **Nindukugga** (1 JAN, Zenith of **Sirius** (**Capricorn**, ruled by **Saturn**)).



SIRIUS

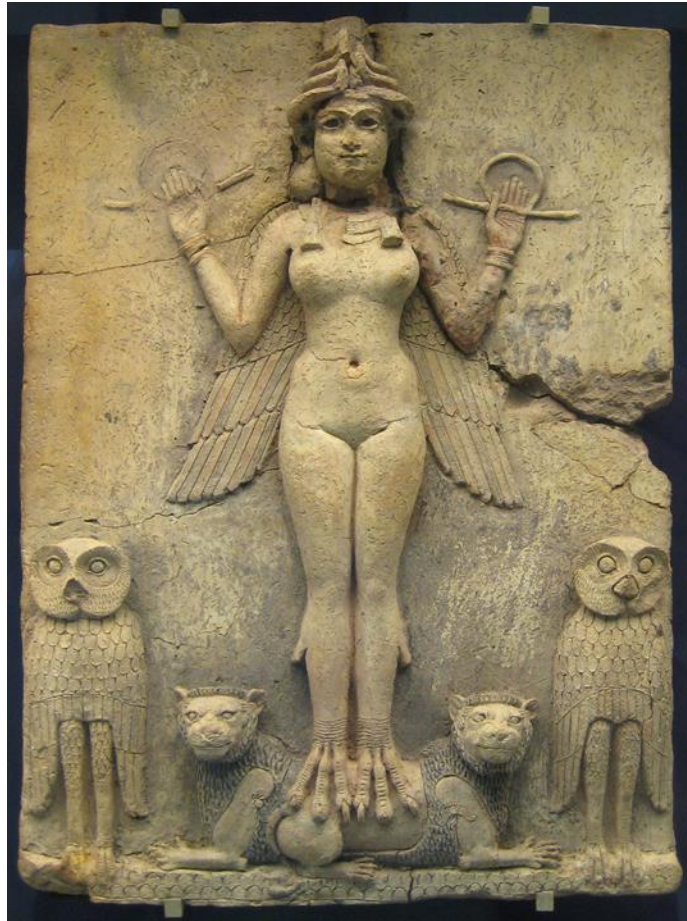
The Feminine Fractal is the **Moon** (the Brightest **Moon**), **Venus** (the Brightest Planet), **Sirius** (the Brightest Ecliptic Star), & Vega (the Brightest Pole Star). Many Ancient Calendars (to include the Egyptians) Begin the New Year with the Heliacal Rising of **Sirius** (21 JUN, **Cancer**, Ruled by the **Moon**). The Zenith of **Sirius** (1 JAN, **Capricorn**, Ruled by **Saturn**). Her Zenith (Maximum Power) is the Day of Circumcision. Her most revered titles are Queen of **Heaven**, Queen of the **Night**, & the Queen of the **Underworld** (**Capricorn** - **Aquarius**), although sometimes the title is attributed to **Venus** (**Pisces**).

AMA-ARHUS - (Arad-Ama-arhus, Amat-Ama-arhus) is an Akkadian Fertility Goddess. She is mentioned in texts as being amongst the pantheon at Uruk in Hellenistic times, & also found as an earlier aspect of the deity **Gula** (**Sirius**).

ASHERAH - In ancient Semitic Religion, is a Mother Goddess who appears in several ancient sources. She appears in Akkadian writings by the name of **Ašratu(m)**, & in Hittite as **Aserdu(s)** or **Asertu(s)**. **Asherah** is generally considered identical with the Ugaritic Goddess **ʿAṯirat** (**Sirius**). **Asherah** is identified as the Queen Consort of the Sumerian God **Anu** (**Heaven**), & Ugaritic **El** (**Venus**), the oldest deities of their respective pantheons, as well as **Yahweh**, the God of Israel & Judah. This role gave her a similarly high rank in the Ugaritic pantheon. Despite her association with **Yahweh** in extra-biblical sources, Deuteronomy 12 has **Yahweh** commanding the destruction of her shrines so as to maintain purity of his worship. The name **Dione**, which like **Elat** means "Goddess", is clearly associated with **Asherah** in the Phoenician History of Sanchuniathon, because the same common epithet ('**Elat**) of "the Goddess par excellence" was used to describe her at Ugarit. The Book of Jeremiah (c. 628 BC) refers to **Asherah** when it uses the title "Queen of **Heaven**" in Jeremiah 7:16-18 & Jeremiah 44:17-19, 25.

She is also called **Elat** (Goddess), the feminine form of **El** (compare **Allat**) & Qodesh (Holiness). **Athirat** in Akkadian texts appears as **Ashratum** (or, **Antu**), the wife of **Anu** (**Heaven**). In contrast, **Ashtart** (**Sirius**) is believed to be linked to the Mesopotamian goddess **Ishtar** (**Venus**) who is sometimes portrayed as the

daughter of **Anu (Heaven)** while in Ugaritic myth, **Ashtart (Sirius)** is one of the daughters of **El (Venus)**, the West Semitic counterpart of **Anu (Heaven)**.



ERESHKIGAL - The Sumerian Goddess of the **Underworld** & Queen of the **Dead** (1 JAN, Zenith of **Sirius**, **Capricorn**, ruled by **Saturn**) whose name means 'Lady of the Great Place' (the 'Great Place' being where the **Sun** is born). **Ereshkigal (Sirius)** was an important & much feared goddess whose consort was the **Bull** of **Heaven (Taurus)**, ruled by **Venus** until he was killed by **Enkidu** (Lord **Earth/Present**). She (**Sirius**) was the older sister of the goddess **Inanna (Venus)** whom she blamed for the **Bull** of **Heaven's (Taurus)** **Death** & whom she (**Sirius**) killed when **Inanna (Venus)** came to visit her in the **Underworld** (1 JAN) for his funeral. Owing to the cleverness of **Enki** (Lord **Earth**) she (**Sirius**) is forced to surrender **Inanna (Venus)** back to the land of the living (21 MAR, Vernal Equinox, **Venus** Heliacal Rise). She (**Sirius**) rules the Land of the **Dead** alone (1 JAN, Zenith of **Sirius**) (known to the Mesopotamians generally as 'The Land of No Return', a dark & gloomy place) until the coming of the god **Nergal** (19 FEB, Zenith of **Orion**, ruled by **Saturn** (Ancient)) who becomes her consort. She was also known as **Irkalla (Sirius)**. Tales concerning **Ereshkigal (Sirius)**, like The Marriage of **Ereshkigal (Sirius)** & **Nergal (Orion)** or The Descent of **Inanna (Venus)** bear similarities to the later Egyptian myth of **Isis (Sirius)** & **Osiris (Orion)** & the Greek myth of **Persephone (Sirius)** & **Demeter (Orion)** & in the motif of the Dying & Reviving God best known from the story of **Jesus Christ (Sun** in **Pisces**).

NINGAL (Great Lady) (see **Ninsun**; see **Ereshkigal**) - A Sumerian Fertility Goddess associated with the **Sun**, mother of **Utu/Shamash**, the **Sun** itself (in **Libra**), wife/consort of **Nanna (Moon)** (21 JUN (**Cancer**, ruled by the **Moon**), the Heliacal Rise of **Sirius**).

GULA (a.k.a. **Ninkarrak**, **Ninisina**). Originally **Bau**, a Dog Goddess (Canis Majoris/Minoris). **Gula (Sirius)** was the Sumerian Healing Goddess, consort of **Ninurta (Orion)**, **Pabilsag (Sagittarian Sun)**, & **Abu** & so also associated with Agriculture & Growth. She was the Patroness of Doctors & the Healing Arts & is usually depicted surrounded by stars with her dog by her side (Canis Majoris/Minoris). She is associated with the **Underworld** & Transformation. Mother of **Damu (Mercury)**, **Ninazu (Mercury)**, & **Gunurra (Venus)**, all three healing deities also linked with Transformation/Transition.

GALLA - The Sumerian **Demons** of the **Underworld** who Drag Humans Down to the Realm of **Ereshkigal (Sirius)**. The **Galla** are featured in the Hymn to Igalima & in *The Descent of Inanna (Venus)* where they are sent by **Enki (Earth)** to help **Inanna (Venus)** & also Drag **Dumuzi (Mercury)** to the **Underworld**.

NINKARRAK (Gula/Ninkarrak) (Azugallatu) - Typically encountered in Medical Incantations as **bēlet balāti**, (Lady of Health). **Gula/Ninkarrak** was also known as the **Azugallatu** (The Great Healer), an epithet she shared with her son **Damu (Mercury)**. Other epithets, such as the "Great Healer of the Land" & "Great Healer of the **Black-Headed Ones**" (**YOU! THE UNCONCIOUS MAN!**) (**WAKE UP!**), & point to her wide-reaching 'national' significance. **Gula/Ninkarrak** was also credited as an "Herb Grower", "the Lady who makes the Broken Up Whole Again" (Remembering the 14 Pieces of Osiris), & "Creates Life in the Land", indicative of an aspect as a Vegetation/Fertility Goddess with Regenerative Powers. At least in the Neo-Babylonian period, she also seems to have had an oneiric quality, being sought in incubation dreams & appearing in **Nocturnal Visions**. **Gula/Ninkarrak** also had a violent side as the "Queen Whose 'Tempest', like a Raging Storm, makes Heaven Tremble & makes the **Earth** Quake". The Goddess & her Dogs (Canis Majoris/Minoris) were frequently mentioned in curse formulae.

NINISINNA - Healing Goddess & patron deity of the city of Isin. She was the daughter of **An (Heaven)** & **Uraš (Heaven)**. She was married to the God **Pabilsag (Sagittarian Sun)**, with whom she had a son **Damu (Mercury)** & a daughter **Gunura (Venus)**. **Ninisinna's** primary role was as a Healing Goddess. She is called "Great Physician of the **Black-Headed Ones**" (**YOU! THE UNCONCIOUS MAN!**) (**WAKE UP!**), & her medical activities include incantations & more invasive methods. In one hymn she is depicted sharpening her scalpel. During the Old Babylonian period she acquired some warlike functions due to her association with **Inana (Venus)**. Here, her scalpel becomes a weapon to tear flesh, & she is described as a storm "whose mouth drips **blood**...from whose mouth spittle spews constantly, pouring venom on the enemy."

She was syncretized (c. 2nd Millennium) with the Healing Goddesses **Gula/Ninkarrak**, **Nintinugga** & **Baba** (all names/versions of **Sirius**). She also came to be connected with **Inana (Venus)** during the Isin Period (2017-1794 BCE) when **Ninisinna (Sirius)** rose in prominence as goddess of the dynastic capital. This situation is perhaps reflected in **Enki (Earth)** & *the World Order*, where **Inana (Venus)** ascribes high status to **Ninisinna (Sirius)**: "She is to be the Mistress of **Heaven**. She is to stand beside **An (Heaven)** & speak to him whenever she desires."

NINSUN - The Sumerian Mother Goddess best known as the mother of **Gilgamesh (Saturn-Mercury)**. She was adept at interpreting dreams & was very wise. Her name is translated as 'Cow of The Wild Enclosure' (**Sirius'** relationship with **Venus**, ruler of **Taurus**) or, alternately, 'Great Lady' (see **Ereshkigal**). In Sumerian mythology, **Ninsun (Sirius)** was originally called **Gula (Sirius)** until her name was later changed to **Ninisinna (Sirius)**. Later, **Gula (Sirius)** became a Babylonian Goddess. According to the ancient Babylonian text

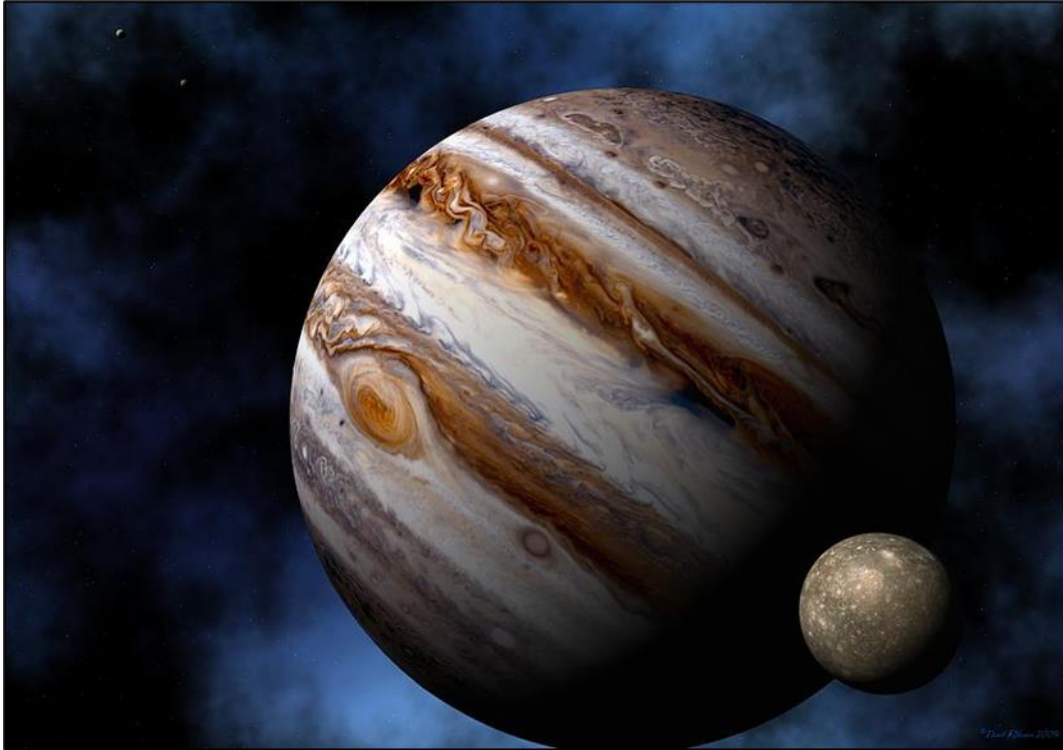
Pabilsag's Journey to **Nibru**, **Ninsun (Sirius)** was originally named **Nininsina (Sirius)**. **Nininsina (Sirius)** wedded **Pabilsag (Sagittarian Sun)** near a riverbank & gave birth to **Damu (Mercury)** as a result of the union. Other sources give **Gunura (Venus)** as **Ninsun's (Sirius)** husband & **Damu's (Mercury)** father.

BABA (Bau, Bawa) - Sumerian Goddess of Lagash, a local Mother Goddess & Fertility Goddess known as 'Mistress of Animals' & 'Lady of Abundance'.

HUMBABA - The Sumerian Daimon & Guardian of the Great Cedar Forest who is killed by **Gilgamesh (Saturn-Mercury)** & **Enkidu** (Lord **Earth/Present**) in *The Epic of Gilgamesh*. He is depicted as a Hairy Giant (**Orion**) with Lion's Claws & a Monster's Face.

SIRTIR (Dittur, Duttur, or Sirtur) - A Sumerian, Babylonian, & Akkadian Goddess. She is a Goddess of **Sheep** & is known from inscriptions & passing comments in texts. She became syncretized with the goddess, **Ninsun (Sirius)**.

QUEEN OF THE NIGHT - A terracotta relief (known as the Burney Relief) (c. 1792-1750 BCE) depicts a Babylonian Goddess whose identity is not clearly established. She has been identified as both **Ishtar/Inanna (Venus)** or as **Ereshkigal (Sirius)** as well as with the demoness **Liltu/Lillith (Venus)**. She is depicted as a naked woman with wings, holding the Rod & Rings of Power, standing on two lions & flanked by **owls**. As the wings point downward, there is an association with the **Underworld & Ereshkigal (Sirius)** established but no stories link that goddess with **owls (Moloch)**. The figure of a woman standing or riding on a lion is associated with **Inanna/Ishtar (Venus)**, as would be the Ring & Rod of Power, but there is no mention of wings on this goddess & no **owl** connection. **Liltu (Venus)**, who caused pregnant women distress & made women barren or, at least, made it difficult for them to conceive, was closely associated with **owls** but not with wings, lions nor the Rod & Rings of Power



JUPITER

[Astrological]: **Jupiter** is the Ruler of **Sagittarius** (Mutable **Fire**, South Node/Ketu Exalted) & **Pisces** (Mutable **Water**, **Venus** Exalted). **Jupiter** is known as the King Planet & is Exalted in **Cancer** (**Cardinal Water**, **Moon** Ruled). **Jupiter**'s Diameter is one Order of Magnitude Smaller than that of the **Sun**, & one Order of Magnitude Larger than that of **Earth**. **Jupiter** Spends **One** Year in Each **Zodiac** Sign. **Jupiter** is Associated with Growth, Expansion, Healing, Prosperity, Good Fortune, & Miracles. **Jupiter** Governs Long Distance & Foreign Travel, Big Business & Wealth, Higher Education, Religion & Philosophy, & Law. **Jupiter** is also Associated with the Urge for Freedom & Exploration, & with Gambling, Merrymaking, & Luck.

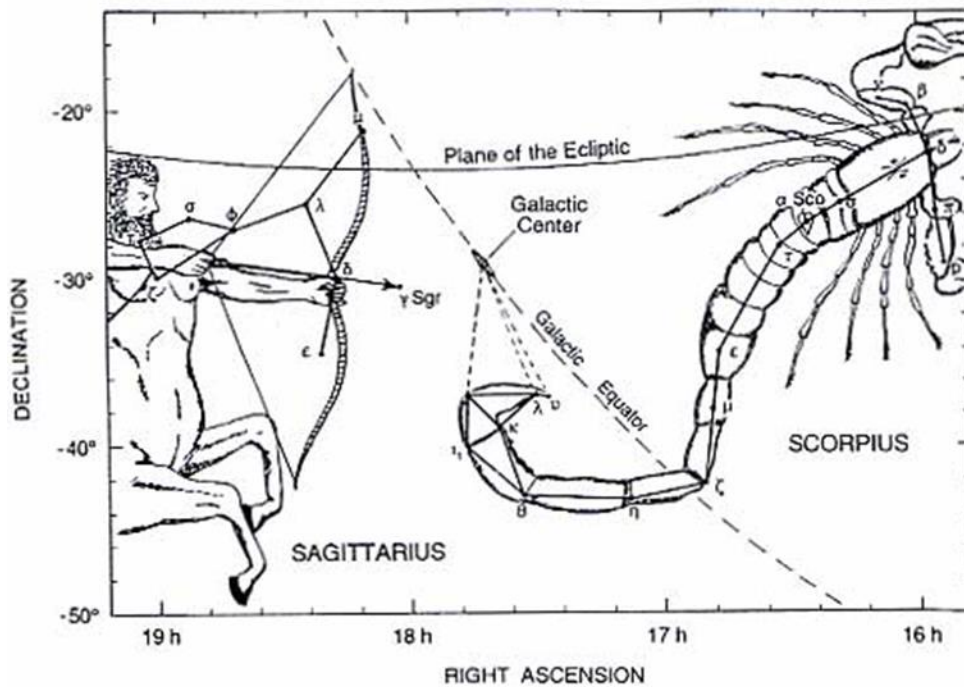
CARA - The Sumerian God known as **Inanna**'s Beautician (**Jupiter** in **Pisces**, **Venus** Exalted). He is one of those whom the **Underworld** Demons try to carry off as a substitute for **Inanna** in the afterlife after she returns to **Earth** in the poem *The Descent of Inanna*. He is spared because **Inanna** tells the demons that **Cara** is essential to her.

PABILSAG - His functions are hard to grasp as he often remains colorless next to his wife, the healing Goddess **Gula/Ninkarrak** (**Sirius** Rising, 21 JUN, **Cancer**, **Jupiter** Exalted). His original functions are also difficult to assert because he was Syncretized with the God **Ninurta** (**Orion**) early on. However, an Early Dynastic inscription from Lagaš already refers to **Pabilsag** as the "**Warrior** of **Enlil** (**Venus**)", an epithet commonly used for the God **Ningirsu** (**Orion**). **Pabilsag**'s functions (upon Merger with **Orion**) included that of a Healer God (related to his wife's functions), a Divine Judge, & a God of War & Hunting. He had some connections to the **Netherworld** due to his syncretism with the **Underworld** God **Nergal** (**Orion**).

A Sumerian literary text describes **Pabilsag**'s journey to the city of Nippur. The fragmentary composition seems to narrate, among other things, the marriage between **Pabilsag** & **Ninisinna** (**Sirius** Rising, **Cancer**,

Jupiter Exalted). According to the most common tradition **Pabilsag** was considered a son of the God **Enlil** (**Venus**), making his wife, the Healing Goddess **Ninisinna** (**Sirius**), **Enlil**'s daughter-in-law. One instance he is described as the Son of the God **An** (**Heaven**).

In the First Millennium **Pabilsag** was Identified with the Constellation **Sagittarius**. He was depicted as a high administrative official (Akkadian Zazakku) while by Hellenistic times he was depicted as a Centaur (**Sagittarius**, **Jupiter** Ruled), a mythical creature part human & part horse, sometimes with the tail of a **Scorpion** (**Scorpio** & **Sagittarius** are Neighboring **Zodiac** Signs) (the Arrows of **Sagittarius** & the Stinger of **Scorpio** Point to **Sagittarius A** – the Super Massive Black Hole in the Center of Your Galaxy).





SUN

The **Sun** is the **Light** Giver & Sustainer of **Life** on **Earth**. In Mesopotamian Cosmologies, the **Sun** was not so-much a Stand-Alone Deity, as it was a Herald of Each **Zodiacal** Age, with the Primary Characteristics Being the Ruling Planet. Of Particular Significance was the **Libran Sun (Sunset)**, being Ruled by **Venus** & Exalted by **Saturn**, & from where ALL Flood Myths Proceed. In Fact, almost every version of the **Sun** is the **Libran Sun**, apart from the **Capricorn Sun**. All versions (below) are of the **Libran Sun**.

ATRA-HASIS (Exceedingly Wise) - The Protagonist of an 18th-Century BC Akkadian Epic recorded in various versions on clay tablets. The Atra-Hasis tablets include both a Creation Myth & a Flood Account, which is one of three surviving Babylonian deluge stories. The name "Atra-Hasis" also appears on one of the Sumerian king lists as king of Shuruppak in the times before a Flood.

BABBAR (The Illuminating One) - Another name for **Utu/Shamash**, the **Libran Sun** God.

SHAMASH (**Samas**, **Babbar**, **Utu**) (God of Dusk) - The Akkadian God of the **Libran Sun** who is identified with the earlier Sumerian **Sun** God **Utu (Libran Sun)**. **Shamash** was God of Supreme Justice (**Libra** = Lady Justice) & was often invoked for the protection of Travelers, Merchants, Soldiers & Sailors. He is often depicted holding a Blade with which he cuts his way through the Mountains each Morning at Dawn. In his duties as Protector, he is Envisaged in a Boat (for Sailors) a Chariot (for Soldiers) or on Horseback (for Travelers & Merchants). His consort was **Aya/Aja (Venus, ruler of Libra)** & **Serida/Sherida (Venus, ruler of Libra)**, Goddess of Dawn (**Venus** is the **Sun** of the Morning/Dawn).

UTU - (**Shamash**, **Samas**, **Babbar**) - The Sumerian **Sun** God of Justice (**Libra** = Justice). He is one of the oldest deities in the Mesopotamian Pantheon (c. 3500 BCE).

UTTU - The Sumerian Spider Goddess. She was the Patroness of Weavers, Weaving & Clothing, daughter of **Enki (Earth)** & **Ninkurra (Virgo)**. She is best known for her role in the myth **Enki (Earth)** & **Ninhursag (Sirius)** in which she complains to the Mother Goddess about **Enki's** neglect & is told to wipe his seed from her body (the Flood), thus Fertilizing the **Earth** & Giving Birth to the first Plants & Trees.

UTNAPISHTIM - In the Epic of **Gilgamesh**, the Wise & Pious Man who is warned by the God **Ea (Earth)** of the Impending Flood & with his wife & the 'Seed of **Life**' Builds an Ark & Survives the Deluge. After the Great Flood he & his wife are Granted Immortality & **live** in The Faraway 'at the Mouth of the Rivers' (Utnapishtim himself is also referred to as 'The Faraway'). He was known as **Ziusudra** to the Sumerians & first appears in The Epic of Atrahasis under that name. 'Utnapishtim' is translated as "He Who Saw **Life**" as he was the only man to survive the Great Flood.

UBARA-TUTU/UBARTUTU – King of Shuruppak & was the last antediluvian King of Sumer. He Reigned for 18,600 years. **Ubaratutu** lived until the deluge swept over the land (like Lamech, the father of Noah). After the deluge, the kingship was reestablished in the northern city of Kish.

URSHANABI - The Boatman in The Epic of **Gilgamesh** who Ferries **Gilgamesh** across the Waters of **Death** to the Land of Dilmun (Paradise) where the immortal **Utnapishtim** lives. **Urshanabi** breaks the eternal laws governing his position as ferryman by taking **Gilgamesh** to **Dilmun** (Paradise) & travels back with him to the city of Uruk at the end of the epic.

ZIUSUDRA (Zin-Suddu) (Life of Long Days) – The King of Shuruppak (c. 2900 BCE) listed in the Sumerian king list recension as the last king of Sumer prior to the Great Flood. He is recorded as the Hero of the Sumerian creation myth & is also known as the Hellenized '**Xisuthros**' from the later writings of Berossus.



MOON

THE PATH OF THE **MOON** – The Mul-Apin listed 18 Constellations that the **Moon** Traversed within a **Month**. These were called the "Gods that Stand on the Path of the **Moon**." The Lists Began with the Pleiades & Ended with Aries: The Star Cluster, the Bull of Heaven, the True Shepherd of Anu, the Old Man,

the Crook, the Great Twins, the Crab, the Lion, the Furrow, the Scales, the Scorpion, Pabilsag, the Goatfish, the Great One, the Tails, Anunitum, the Swallow, & the Hired Man.

NANNA (Nanna-Suen, Nannar, Sin) - The Sumerian God of the Full Moon & Wisdom. He is the Father of Inanna (Venus) in some stories & Father, with Ningal, of Utu/Shamash (Libran Sun, Venus Ruler). As Son of Enlil & Ninlil (both Venus), he is considered an important deity in the act of creation. His symbol is the Crescent Moon & he was associated with the Power of the Bull (Taurus, Venus Ruled, Moon Exalted) & the Lion-Dragon (Leo, Sun Ruler). Best known through the work of the poet/priestess Enheduanna. Nanna (Full Moon) is one of the Oldest Gods in the Mesopotamian Pantheon & is first mentioned at the dawn of writing in Sumer (c. 3500 BCE) (Age of Taurus).

SIN (Nanna, Suen, Nanna-Suen, Nannar) - The Babylonian Moon God whom the Sumerians knew as Nanna. Sin was associated with the Fertility of Women & Cattle (Moon Exalted in Taurus). His name is pronounced 'Seen'. He is depicted as a man standing with a Crescent Moon.

SIN – Transgression Against Divine Law. Every Culture has its Own Interpretation of what it means to Commit a Sin, but in general are Actions (in Thought, Word, or Act) considered Immoral, Selfish, Shameful, Harmful, or Alienating.

